


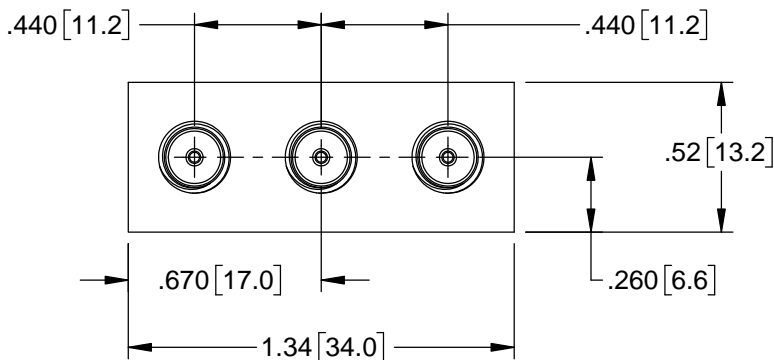
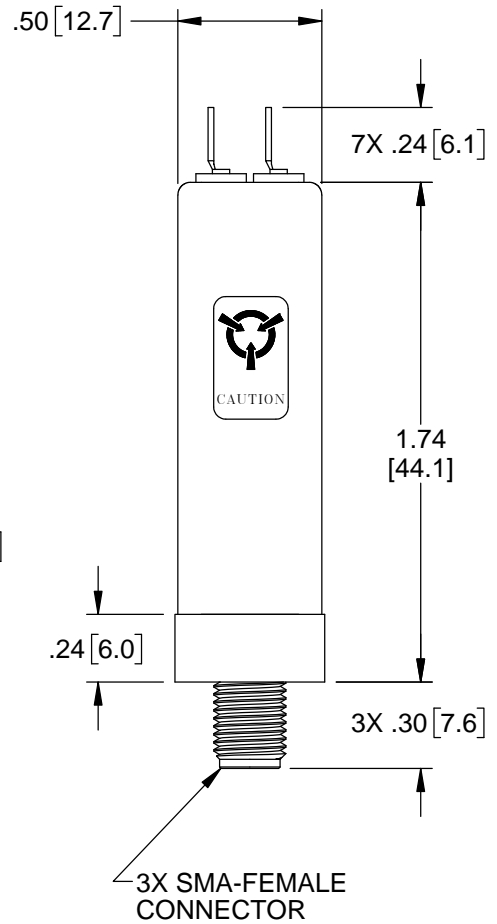
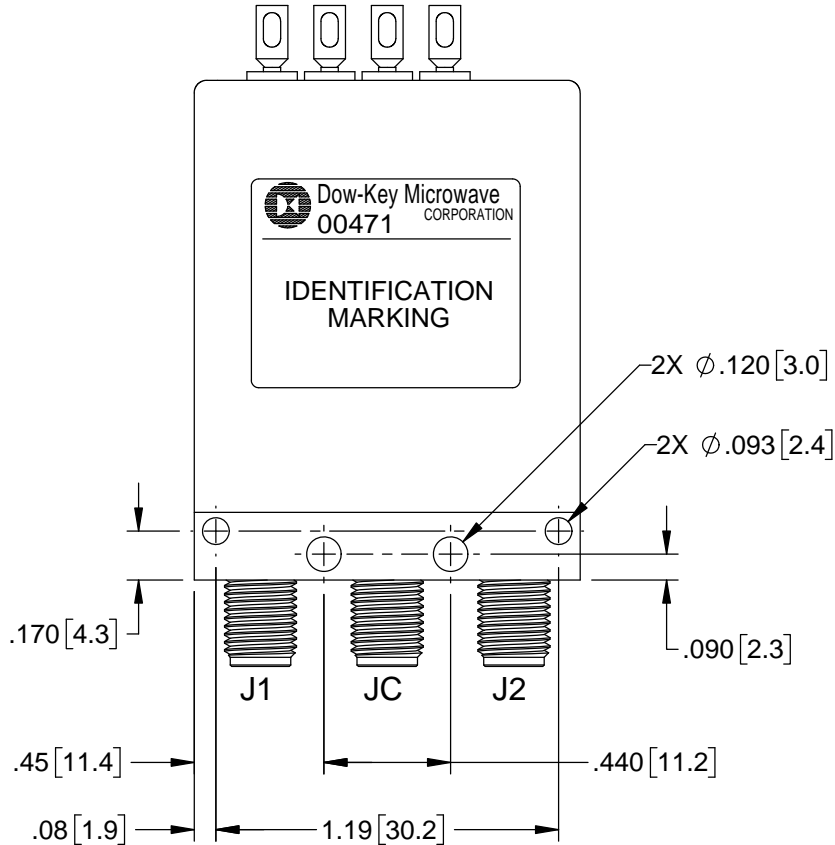
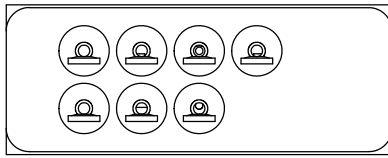
REVISIONS			
REV.	DESCRIPTION	DATE	APPROVED
E	REVISED AND REDRAWN PER ECO 7764	6/21/04	J.S.
F	REVISED AND REDRAWN PER ECO 11867	4/17/18	K.R.

Nominal Coil Voltage	Part Number
6 Vdc	401-410832A
12 Vdc	401-420832A
15 Vdc	401-490832A
24 Vdc	401-480832A
28 Vdc	401-430832A

APPROVALS	DATE	 DowKey[®] Microwave CORPORATION <small>A DOVER TECHNOLOGIES COMPANY</small>		4822 McGrath Street Ventura, CA. 93003-5641 PH: (805) 650-0260 FAX: (805) 650-1734
DRAWN SARA LEE	04/13/18	SWITCH, SPDT, LATCHING SELF CUT-OFF SMA-FEMALE CONNECTOTS, INDICATORS 5V CONTROL CIRCUIT		
ENGINEERING T. STRASBURGER	4/13/2018			
QUALITY S. LYNCH	4/16/2018	CODE IDENT. NO. 00471	DWG. NO. 401-4X0832A	
MANUFACTURING R. GARCIA	4/16/2018	SCALE NONE		SHEET 1 OF 3

OUTLINE DRAWING:

1 2 3 4
5 6 7



[] MILLIMETERS

UNLESS OTHERWISE SPECIFIED TOLERANCES ARE: .XXX ±.010 ANGLES: ±3° .XX ±.030	CODE IDENT. NO. 00471	DWG. NO. 401-4X0832A	REV. F
	SCALE NONE	SHEET 2 OF 3	

SPECIFICATION:

1.0 RF CHARACTERISTICS:

1.1 FREQUENCY (GHz)	DC - 1	1 - 4	4 - 8	8 - 12	12 - 18
1.2 VSWR (RATIO MAX)	1.10:1	1.15:1	1.20:1	1.30:1	1.35:1
1.3 INSERTION LOSS (dB MAX)	0.10	0.15	0.20	0.30	0.35
1.4 ISOLATION (dB MIN)	85	80	70	65	60
1.5 RF POWER (WATTS CW MAX) AT SEA LEVEL, +40°C, LOAD VSWR 1:1	225	125	90	75	60
1.6 IMPEDANCE (NOMINAL)	50 OHMS				

2.0 ACTUATION DATA:

2.1	NOMINAL VOLTAGE	OPERATING VOLTAGE	CURRENT (NOMINAL) @ NOMINAL VOLTAGE & 25°C
	6	5-8	285mA
	12	11-14	220mA
	15	13-17	110mA
	24	20-28	125mA
	28	24-32	110mA

2.2 SWITCHING TIME: 15mS MAX
 2.3 OPERATING MODE: LATCHING SELF CUT-OFF

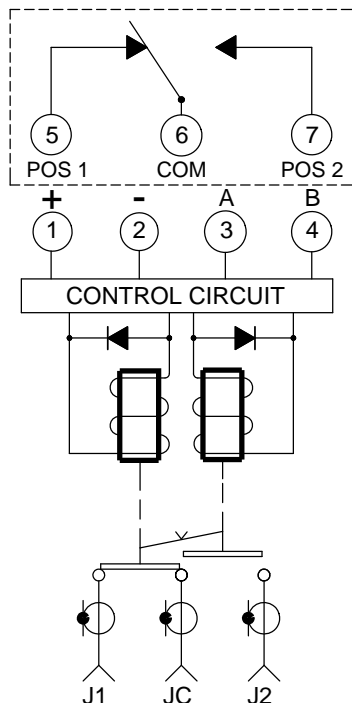
3.0 MECHANICAL:

3.1 CONTACT ARRANGEMENT: SPDT
 3.2 RF CONTACTS: BREAK BEFORE MAKE
 3.3 WEIGHT: 1.4oz (40g) NOMINAL
 3.4 DESIGN LIFE: 1,000,000 CYCLES MINIMUM

4.0 ENVIRONMENTAL:

4.1 OPERATING TEMPERATURE: -25°C TO +65°C
 4.2 STORAGE TEMPERATURE: -55°C TO +85°C
 4.3 SEAL: EPOXY SEAL

SCHEMATIC:



RF PATH	INDICATOR PATH	LOGIC INPUT 'A'	LOGIC INPUT 'B'
JC - J1	COM - 1	1	0
JC - J2	COM - 2	0	1

LOGIC HI "1" = 2.4-5.5Vdc (1.35mA MAX @ 3.85Vdc)
 LOGIC LO "0" = 0-0.8Vdc (0mA @ 0Vdc)

SWITCH SHOWN WITH POSITION 1 SELECTED

CODE IDENT. NO. 00471	DWG. NO. 401-4X0832A	REV. F
SCALE NONE	SHEET 3 OF 3	