

REVISIONS			
REV.	DESCRIPTION	DATE	APPROVED
A	PRODUCTION RELEASE (PER ECO #8760)	9/26/06	A.L.
B	REVISED PER ECO #9232	5/21/08	K.R.

Nominal Coil Voltage	Part Number
12 Vdc	401U-4208
15 Vdc	401U-4908
24 Vdc	401U-4808
28 Vdc	401U-4308

REVISIONS	B	B	B			
SHEET NO.	1	2	3			
APPROVALS			DATE			
DRAWN	S. LEE		1/6/06			
ENG	G. NICKLAUS		1/9/06			
ENG. MGR.	R. SZNUK		1/9/06			
SALES MGR.	V. HARTER		1/9/06			
Q.A. MGR.	R. MATSUMOTO		1/9/06			
MFG. MGR.	M. MARTINEZ		1/9/06			



DowKey®
Microwave
CORPORATION

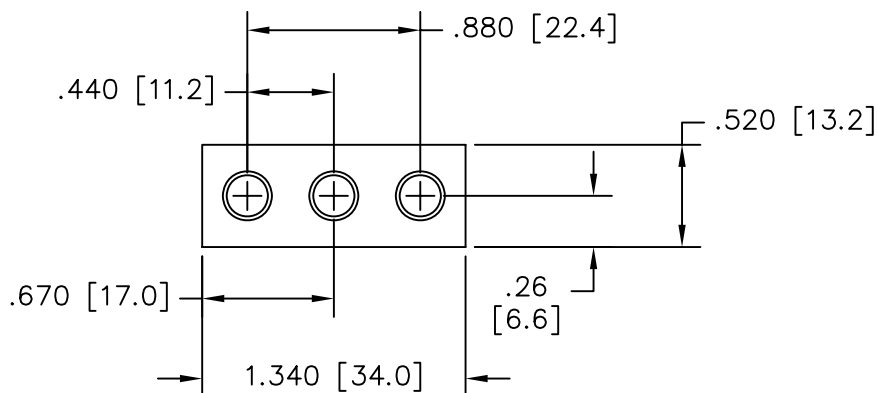
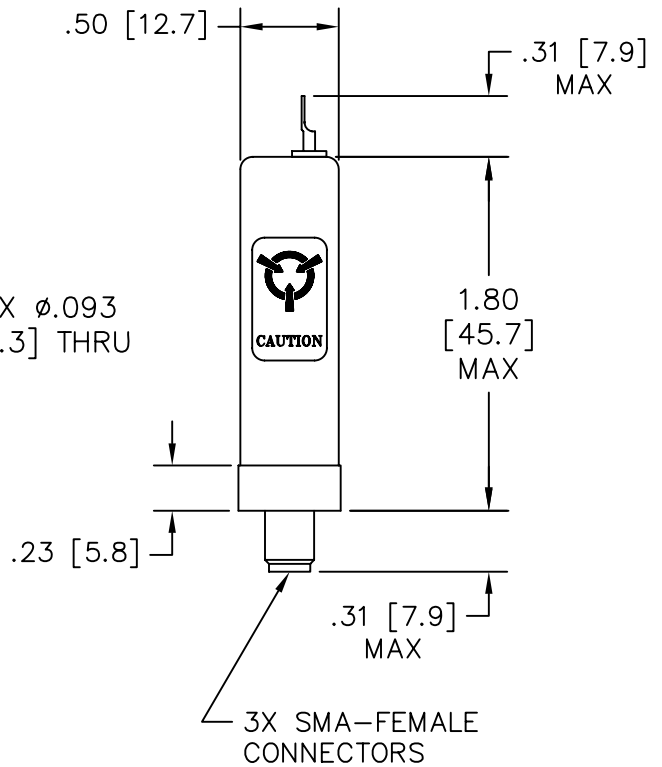
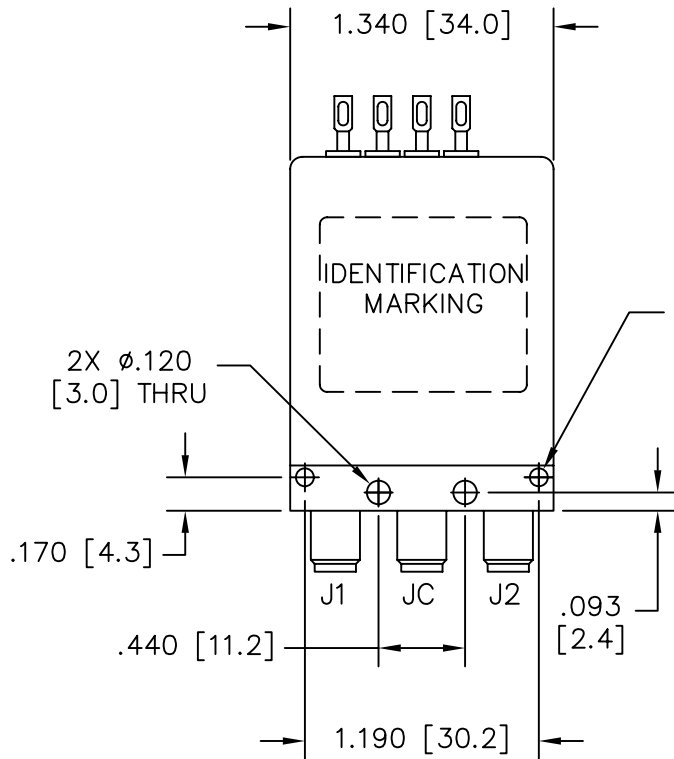
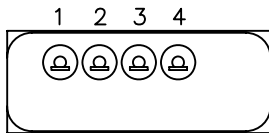
4822 McGrath Street
Ventura, CA. 93003-5641
PH: (805) 650-0260
FAX: (805) 650-1734

A **DOVER** TECHNOLOGIES COMPANY

SWITCH, SPDT, LATCHING SELF CUT-OFF
SMA-FEMALE CONNECTORS
5 MILLION CYCLES

CODE IDENT. NO.	DWG. NO.	SHEET 1 OF 3	
00471	401U-4X08		
SCALE NONE	FINAL ASSY:		

OUTLINE DRAWING:



[] MILLIMETERS

UNLESS OTHERWISE SPECIFIED TOLERANCES ARE:
 .XXX ±.010 ANGLES: ±3°
 .XX ±.030

CODE IDENT. NO.
00471

DWG. NO.
401U-4X08

REV.
B

SCALE NONE

SHEET 2 OF 3

SPECIFICATIONS:

1. RF CHARACTERISTICS:

1.1 FREQUENCY (GHz):	DC-1	1-4	4-8	8-12	12-18
1.2 VSWR (RATIO MAX):	1.10:1	1.15:1	1.20:1	1.30:1	1.35:1
1.3 INSERTION LOSS (dB MAX):	0.10	0.15	0.20	0.30	0.35
1.4 ISOLATION (dB MIN):	85	80	70	65	60
1.5 RF POWER (WATTS CW MAX):	200	125	90	75	60

2. ACTUATION DATA:

2.1	NOMINAL VOLTAGE	OPERATING VOLTAGE	CURRENT (MAX)
			@ NOMINAL VOLTAGE & 25°C
	12	11-14	75mA
	15	13-17	95mA
	24	20-28	105mA
	28	24-32	120mA

- 2.2 SWITCHING TIME: 15ms MAX
 2.3 OPERATING MODE: LATCHING SELF CUT-OFF

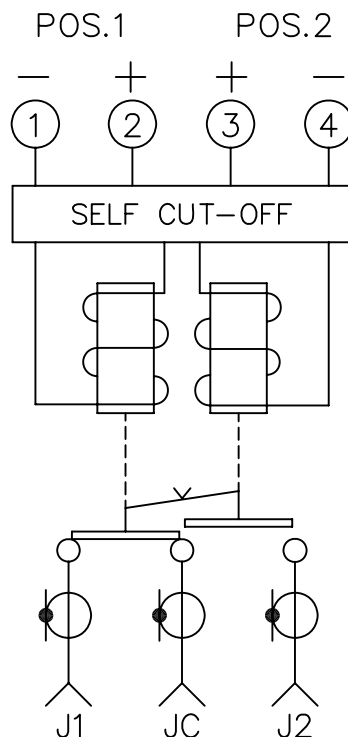
3. MECHANICAL:

- 3.1 RF CONTACTS: BREAK BEFORE MAKE
 3.2 WEIGHT: 1.4oz. (40g.) NOMINAL
 3.3 DESIGN LIFE: 5,000,000 CYCLES

4. ENVIRONMENTAL:

- 4.1 OPERATING TEMPERATURE: -25°C TO +65°C
 4.2 STORAGE TEMPERATURE: -55°C TO +85°C
 4.3 SEAL: EPOXY SEALED

SCHEMATIC:



CODE IDENT. NO. 00471	DWG. NO. 401U-4X08	REV. B
SCALE NONE	SHEET 3 OF 3	