

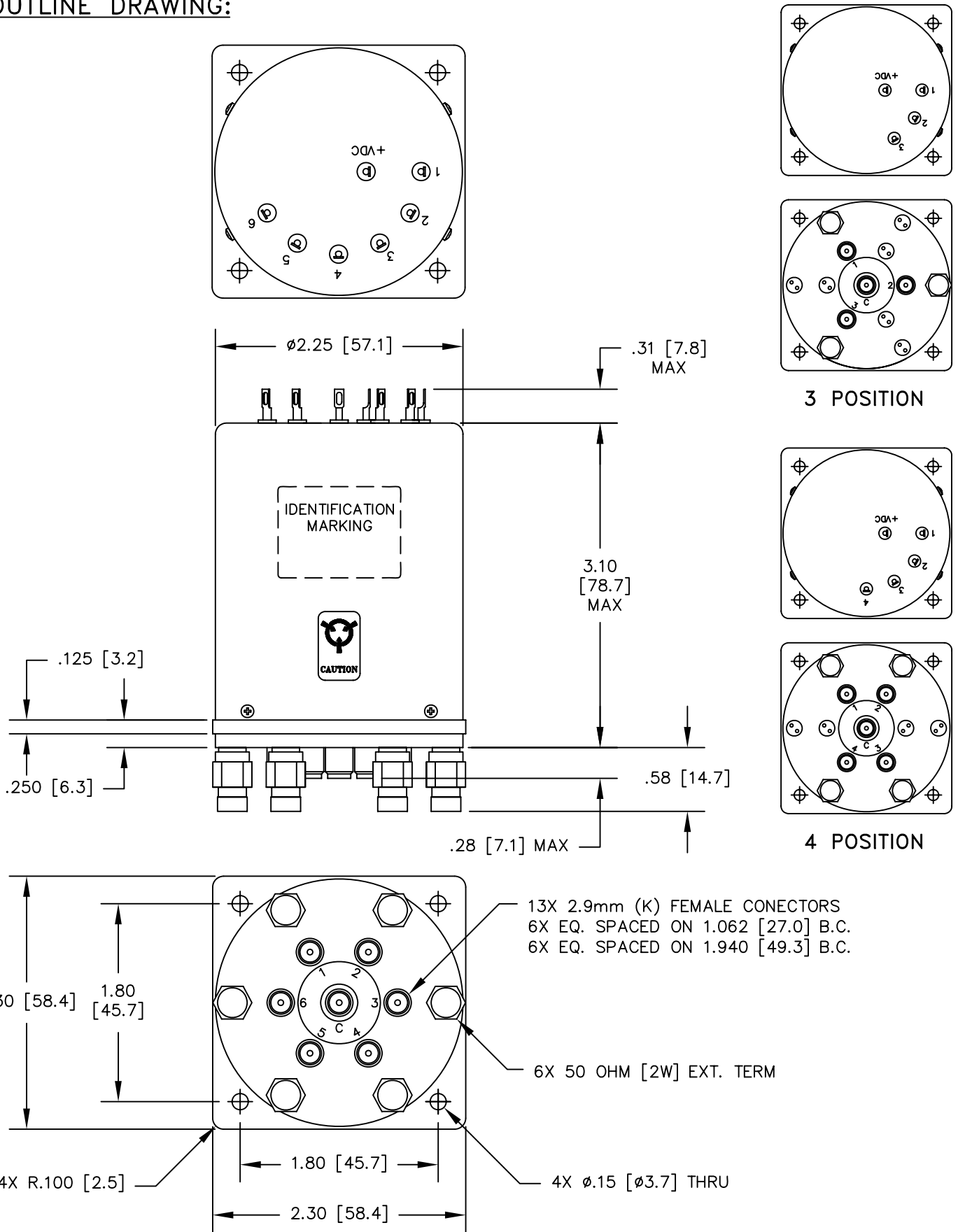


REVISIONS			
REV.	DESCRIPTION	DATE	APPROVED
A	PRODUCTION RELEASE	4/18/07	K.R.

Nominal Coil Voltage	Part Number		
	SP3T	SP4T	SP6T
12 Vdc	531Y-421103	541Y-421103	561Y-421103
24 Vdc	531Y-481103	541Y-481103	561Y-481103
28 Vdc	531Y-431103	541Y-431103	561Y-431103

REVISIONS	A	A	A				 <b>DowKey<sup>®</sup> Microwave CORPORATION</b>	4822 McGrath Street Ventura, CA. 93003-5641 PH: (805) 650-0260 FAX: (805) 650-1734
SHEET NO.	1	2	3					
APPROVALS			DATE					SWITCH, 3-6 POSITION, LATCHING SELF CUT-OFF 2.9mm (K) FEMALE CONNECTORS, 50 OHM [2W] EXT. TERMINATIONS, 40 GHZ
DRAWN	SARA LEE		3/30/07					
ENG	G. NICKLAUS		4/17/07					
ENG. MGR.	R. SZNUK		4/17/07					
SALES MGR.	A. CHEUNG		4/17/07					
Q.A. MGR.	R. MATSUMOTO		4/18/07					
MFG. MGR.	S. ORNELAS		4/18/07				CODE IDENT. NO. 00471	DWG. NO. 5X1Y-4X1103
SCALE			NONE		FINAL ASSY:		SHEET 1 OF 3	

**OUTLINE DRAWING:**



13X 2.9mm (K) FEMALE CONECTORS  
 6X EQ. SPACED ON 1.062 [27.0] B.C.  
 6X EQ. SPACED ON 1.940 [49.3] B.C.

6X 50 OHM [2W] EXT. TERM

4X  $\phi .15$  [ $\phi 3.7$ ] THRU

[ ] MILLIMETERS

UNLESS OTHERWISE SPECIFIED TOLERANCES ARE: .XXX $\pm .010$ ANGLES: $\pm 3^\circ$ .XX $\pm .030$	CODE IDENT. NO. 00471	DWG. NO. 5X1Y-4X1103	REV. A
	SCALE NONE	SHEET 2 OF 3	

## SPECIFICATIONS:

### 1. RF CHARACTERISTICS:

1.1 FREQUENCY (GHz):	DC-6	6-12	12-18	18-26.5	26.5-40
1.2 VSWR (RATIO MAX):	1.30:1	1.40:1	1.50:1	1.70:1	1.95:1
1.3 INSERTION LOSS (dB MAX):	0.30	0.40	0.50	0.70	0.95
1.4 ISOLATION (dB MIN):	70	60	60	55	50
1.5 RF POWER (WATTS CW MAX):	100	70	60	45	30

### 2. ACTUATION DATA:

2.1

NOMINAL VOLTAGE	OPERATING VOLTAGE	CURRENT (TYP) @ NOMINAL VOLTAGE & 25°C
12	11-14	530mA
15	13-17	400mA
24	20-28	240mA
28	24-32	210mA

- 2.2 SWITCHING TIME: 15ms MAX  
 2.3 OPERATING MODE: LATCHING SELF CUT-OFF

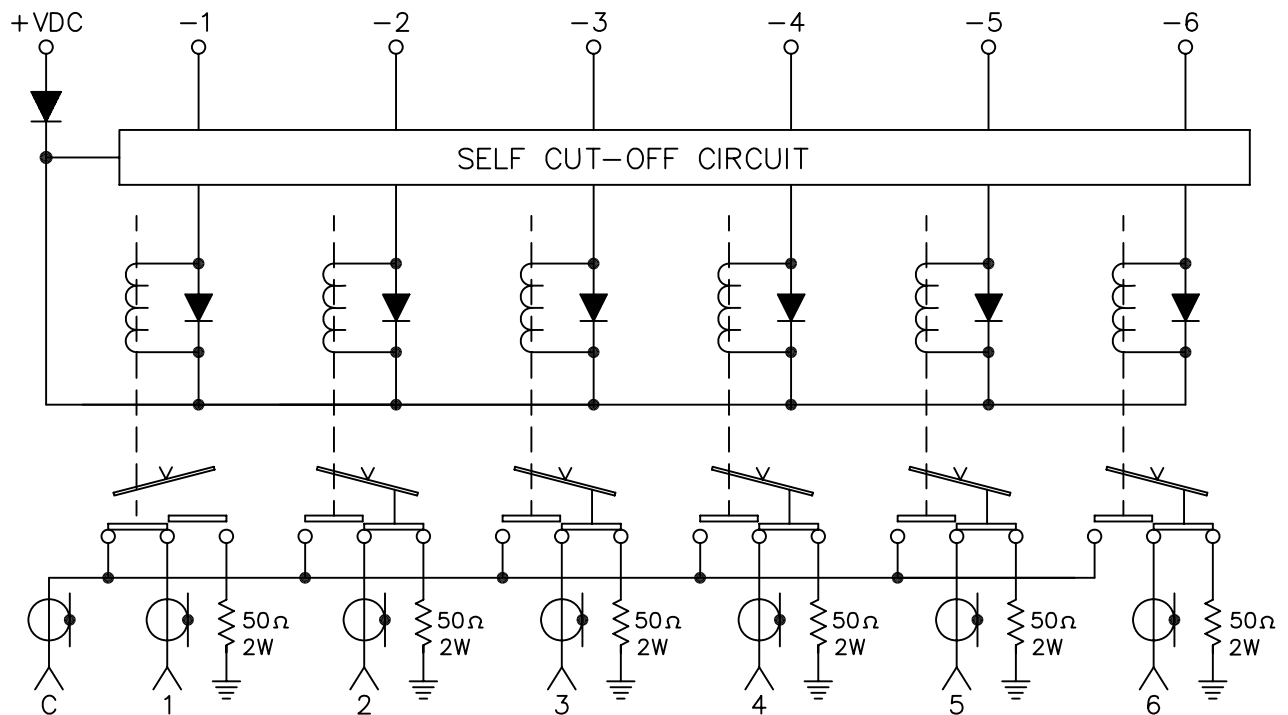
### 3. MECHANICAL:

- 3.1 RF CONTACTS: BREAK BEFORE MAKE  
 3.2 WEIGHT: 11oz. (312g.) NOMINAL  
 3.3 DESIGN LIFE: 1,000,000 CYCLES MIN

### 4. ENVIRONMENTAL:

- 4.1 OPERATING TEMPERATURE: -25°C TO +65°C  
 4.2 STORAGE TEMPERATURE: -55°C TO +85°C  
 4.3 SEAL: SAND AND DUST

## SCHEMATIC:



SCHEMATIC SHOWN WITH IN POSITION 1

CODE IDENT. NO. 00471	DWG. NO. 5X1Y-4X1103	REV. A
SCALE NONE	SHEET 3 OF 3	