



- DC-18 GHz
- Low/Medium Power
- 1M Life Cycles

RF Characteristics

Frequency GHz	VSWR (max)	Isolation dB (min)	Ins. Loss dB (max)
DC-4	1.20	70	0.20
4-8	1.30	65	0.30
8-12.4	1.40	60	0.40
12.4-18	1.60	55	0.60

Note: Performance may vary depending on selected options

Specifications

Operating Voltage:

- 12 Vdc (11-14 Vdc)
- 24 Vdc (20-28 Vdc)
- 28 Vdc (24-32 Vdc)

Coil Current (max. @ nom. Vdc & 25°C)*:

- 12 Vdc 440 mA
- 24 Vdc 225 mA
- 28 Vdc 190 mA

Switching Time*:

20 ms maximum

Operating Temperature:

- 25°C to +65°C (Standard)
- 55°C to +85°C (Extended "T" Option)

Mechanical Life, Cycles:

1,000,000 minimum

Vibration, Operating:

10G RMS, 20-2000 Hz

Mechanical Shock, Non-Operating:

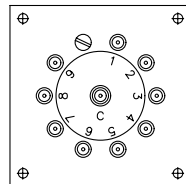
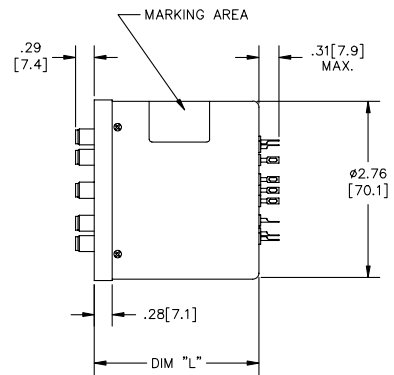
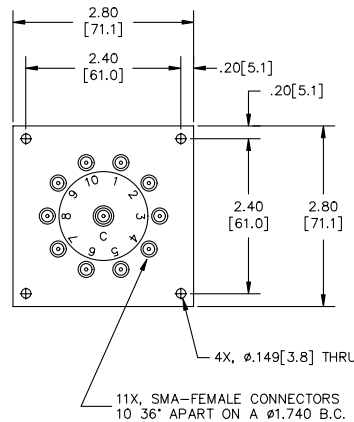
50G, 1/2 Sine, 11 ms

Nominal Weight*:

15.0 oz. (425 g.)

* Performance and weight varies depending on selected options.

Mechanical



9 POSITION

DIM "L" (MAX)	MODEL	ELEC. SCHEM.
3.00 [76.2]	5Z1-5X08	1
3.00 [76.2]	5Z1-5X0822	1
3.00 [76.2]	5Z1-5X0802A	2
3.00 [76.2]	5Z1-5X0822A	2

5A1-430822 Shown

For Electrical Schematic, see page # 3-21

Part Number Selector

5A1 J - 4 2 08 02 A - ROHS

Family	Special Options	Actuator	Coil Voltage	Connectors	Indicators	Circuit Options
591 = SP9T 5A1 = SP10T	J = 9 or 26 Pin 'D' Connector P = Power Plug R = (-) Com S = Epoxy Seal T = -55° to +85° C	4 = Latching Self Cutoff	2 = 12 Vdc 3 = 28 Vdc 8 = 24 Vdc 9 = 15 Vdc	08 = SMA Female	02 = No Indicators* 22 = SPST Indicators	A = TTL High E = BCD Decoding

*Declared only with
Circuit Options

Note: TTL option includes suppression diode. Other options may be available and all combinations may not be possible. Please consult with factory.