



- DC-2 GHz
- DC-6 GHz
- DC-12.4 GHz
- Medium/High Power
- 1M Cycles

RF Characteristics

| Frequency GHz | VSWR (max) | Isolation dB (min) | Ins. Loss dB (max) |
|---------------|------------|--------------------|--------------------|
| DC-1 | 1.15 | 85 | 0.15 |
| 1-2 | 1.20 | 80 | 0.20 |
| 2-4 | 1.25 | 70 | 0.25 |
| 4-8 | 1.45 | 60 | 0.40 |
| 8-12.4 | 1.60 | 60 | 0.50 |

Note: Performance applies to N and TNC type connectors. Consult with factory for other performances.

Specifications

Operating Voltage (across temperature range):

- 12 Vdc (11-14 Vdc)
- 24 Vdc (20-28 Vdc)
- 28 Vdc (24-32 Vdc)

Coil Current (max. @ nom. Vdc & 25°C)*:

- 12 Vdc 320 mA
- 24 Vdc 240 mA
- 28 Vdc 185 mA

Switching Time:

20 ms maximum

Operating Temperature:

- 25°C to +65°C (Standard)
- 55°C to +85°C (Extended "T" Option)

Mechanical Life, Cycles:

1,000,000 minimum

Vibration, Operating:

10G RMS, 20-2000 Hz

Mechanical Shock, Non-Operating:

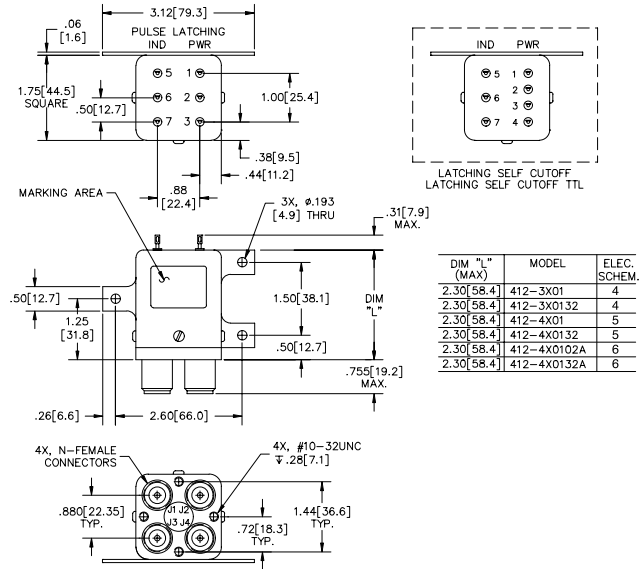
30 G, 1/2 Sine, 11 ms

Nominal Weight*:

14 oz. (397 g.)

* Performance and weight varies depending on selected options.

Mechanical



412-3X0132 Shown

For Electrical Schematic, see page # 2-7

Part Number Selector

412 J - 4 2 01 02 A - ROHS

Special Options

A = High Power

C = Special Mounting

Bracket

J = 'D' Connector

N = No Mounting

Bracket

P = Power Plug

R = (+) Com

S = Epoxy Seal

T = -55°C to + 85°C

W = Low PIM

Actuator

3 = Pulse Latching

4 = Latching Self Cutoff

7 = Pulse Latching with

Suppression Didoes

Coil Voltage

2 = 12 Vdc

3 = 28 Vdc

8 = 24 Vdc

9 = 15 Vdc

Connectors

01 = N Female

02 = BNC Female

03 = TNC Female

53 = SC Female*

*Consult Dow-Key for dimensions

Indicators

02 = No Indicators**

32 = Indicators

**Declared only with

Circuit Options

Circuit Options

A = TTL High

Note: TTL option includes suppression diode. Other options may be available and all combinations may not be possible. Please consult with factory.