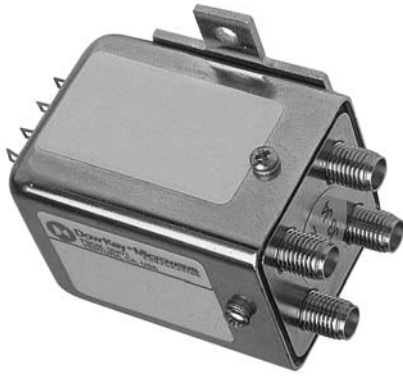


RF Characteristics



- DC-18 GHz
- DC-40 GHz
- Low/Medium Power
- 1M/5M Life Cycles

Frequency GHz	VSWR (max)	Isolation dB (min)	Ins. Loss dB (max)
0-1	1.10	85	0.10
1-4	1.20	80	0.20
4-8	1.30	70	0.30
8-12	1.40	65	0.40
12-18	1.50	60	0.50
DC-40	Consult with factory for data		

Specifications

Operating Voltage (across temperature range):

- 12 Vdc (11-14 Vdc)
- 24 Vdc (20-28 Vdc)
- 28 Vdc (24-32 Vdc)

Coil Current (max. @ nom. Vdc & 25°C)*:

- 12 Vdc 320 mA
- 24 Vdc 175 mA
- 28 Vdc 135 mA

Switching Time:

20 ms maximum

Operating Temperature:

- 25°C to +65°C (Standard)
- 55°C to +85°C (Extended "T" Option)

Mechanical Life, Cycles*:

- 1,000,000 minimum
- 5,000,000 minimum ("U" Option)

Vibration, Operating:

10G RMS, 20-2000 Hz

Mechanical Shock, Non-Operating:

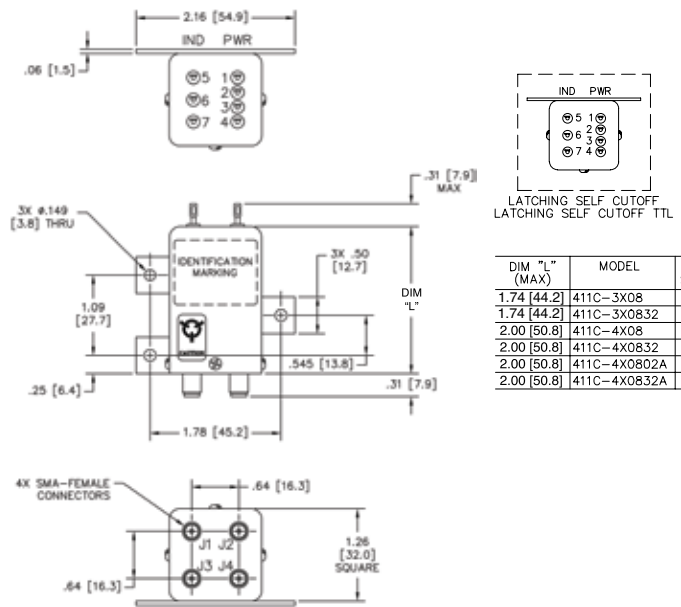
50G, 1/2 Sine, 11 ms

Nominal Weight*:

4.0 oz. (113 g.)

* Performance and weight varies depending on selected options.

Mechanical



411C-4X0832A Shown

For Electrical Schematic, see page # 2-7

Part Number Selector

Special Options

- A = High Power
- B = Bypass (J2-J4)
- D = Bypass (J1-J2)
- E = Bypass (J3-J4)
- F = Bypass (J1-J3)
- I = Immersion Seal
- J = 'D' Connector
- K = 26.5 GHz*
- N = No Mounting Bracket
- R = (+) Com
- S = Epoxy Seal
- T = -55°C to + 85°C
- U = 5M Life Cycles
- W = Low PIM ; Y = 40 GHz

411C J - 4 2 08 02 A - ROHS

Actuator	Coil Voltage	Connectors	Indicators	Circuit Options
3 = Pulse Latching	2 = 12 Vdc	08 = SMA Female	02 = No Indicators*	A = TTL High
4 = Latching Self Cutoff	3 = 28 Vdc	11 = 2.9 mm (K)	32 = Indicators	L = TTL Low
7 = Pulse Latching with Suppression Diode	8 = 24 Vdc	71 = SMB Female		N = CANBus
	9 = 15 Vdc		*Declared only with Circuit Options	

*Not available with all options

Note: TTL option includes suppression diode. Other options may be available and all combinations may not be possible. Please consult with factory.