



- DC-18 GHz
- DC-26.5 GHz
- Low/Medium Power
- 5M Life Cycles

RF Characteristics

Frequency GHz	VSWR (max)	Isolation dB (min)	Ins. Loss dB (max)
DC-1	1.10	85	0.10
1-4	1.15	80	0.15
4-8	1.20	70	0.20
8-12	1.30	65	0.30
12-18	1.35	60	0.35
*18-26.5	1.50	55	0.50

*Performance varies depending on selected options

Specifications

Operating Voltage (across temperature range):

- 12 Vdc (11-14 Vdc)
- 24 Vdc (20-28 Vdc)
- 28 Vdc (24-32 Vdc)

Coil Current (max. @ nom. Vdc & 25°C)*:

- 12 Vdc 265 mA
- 24 Vdc 205 mA
- 28 Vdc 175 mA

Switching Time:

15 ms maximum

Operating Temperature:

- 25°C to +65°C (Standard)
- 55°C to +85°C (Extended "T" Option)

Mechanical Life Cycles*:

5,000,000 minimum

Vibration, Operating:

10 G RMS, 20-2000 Hz

Mechanical Shock, Non-Operating:

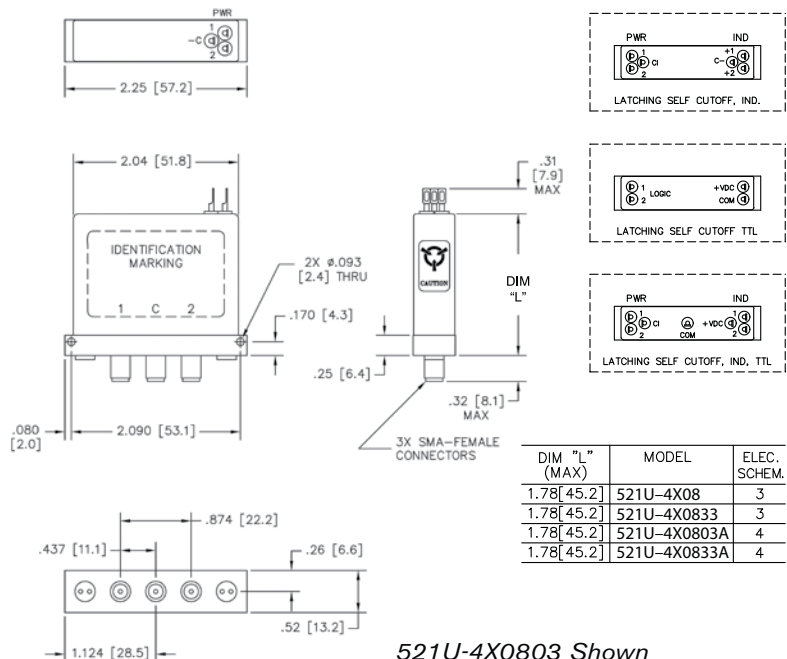
50 G, 1/2 Sine, 11 ms

Nominal Weight*:

2.5 oz. (71 g.)

* Performance and weight varies depending on selected options.

Mechanical



521U-4X0803 Shown

For Electrical Schematic, see page # 1-14

Part Number Selector

521 J U - 4 2 08 03 A - ROHS

Special Options	Actuator	Coil Voltage	Connectors	Indicators	Circuit Options
I = Immersion Seal	3 = Pulse Latching	2 = 12 Vdc	08 = SMA Female	02 = No Indicators, Unterminated Ports*	A = TTL High
J = 'D' Connector	4 = Latching Self Cutoff	3 = 28 Vdc		03 = No Indicators, 2W Terminations	L = TTL Low
K = 26.5 GHz		8 = 24 Vdc		** 32 = Indicators, Unterminated Ports	
R = (+) Com		9 = 15 Vdc		** 33 = Indicators, 2W Terminations	*Declared only with Circuit Options
T = -55°C to +85°C					
W = Low PIM					

** Indicators are ONLY available with 1M life cycle switches (without the 'U' option)

Note: TTL option includes suppression diode. Other options may be available and all combinations may not be possible. Please consult with factory.