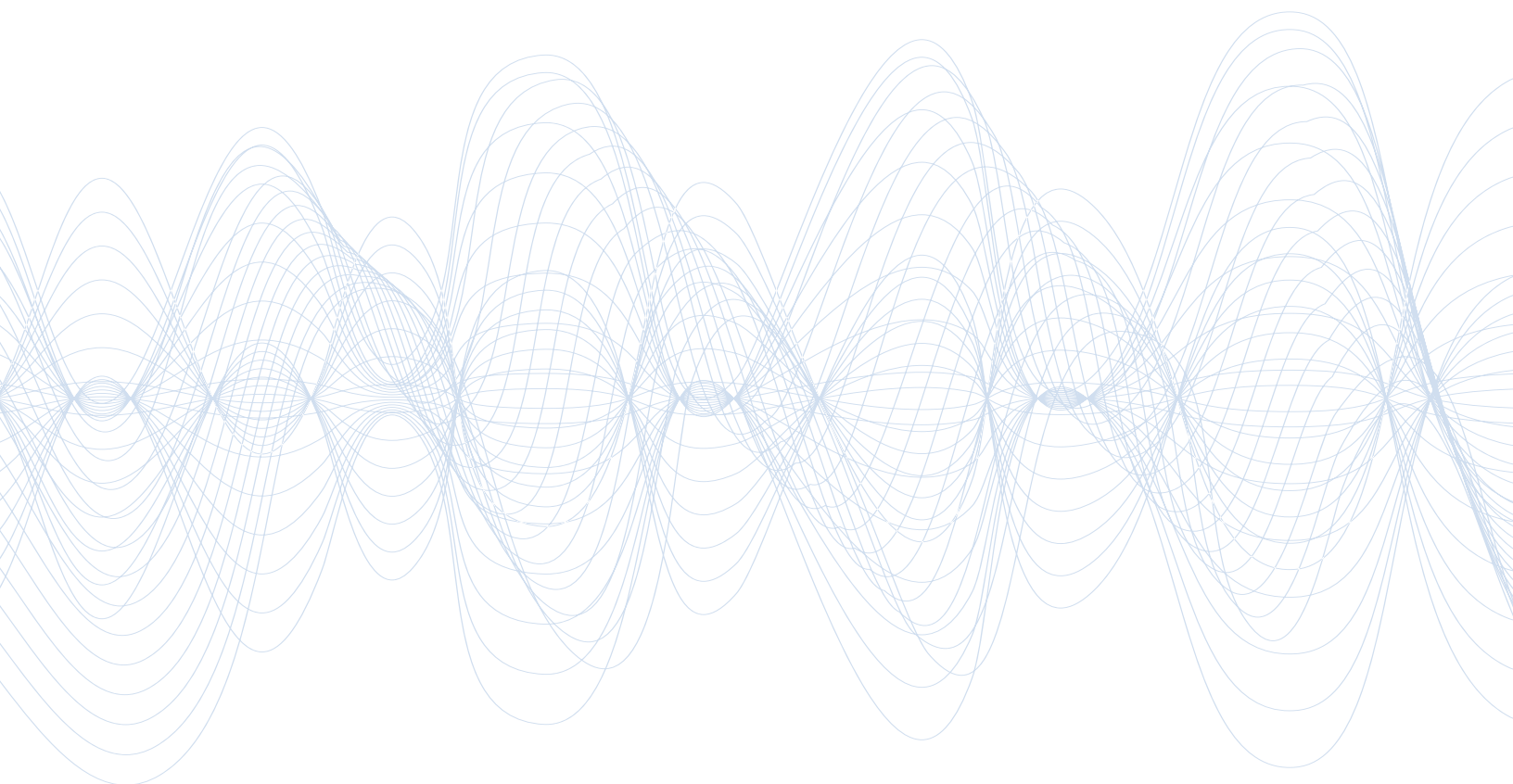


HIGH REPEATABILITY RELIANT™ COAXIAL SWITCH



DowKey® Microwave
CORPORATION

A **DOVER** COMPANY



- High Repeatability
- DC-26.5 GHz
- 0.03 dB Insertion Loss Repeatability @ 25°C
- 5M Life Cycles

RF Characteristics

Frequency GHz	VSWR (max)	Isolation dB (min)	Ins. Loss dB (max)
DC-4	1.20	100	0.36*
4-12.4	1.35	80	0.49*
12.4-18	1.45	70	0.57*
18-26.5	1.70	65	0.68*

* Value calculated as follows: $0.015 \times \text{Frequency [GHz]} + 0.3$

Specifications

Operating Voltage (across temperature range):

12 Vdc (11-14 Vdc)
24 Vdc (20-32 Vdc)

Coil Current (max. @ nom. Vdc & 25°C):

12 Vdc Consult with factory
24 Vdc 195 mA

Stand-By Current (nom. Vdc @ 25°C):

CANBus: 12 Vdc 35 mA
TTL: 24 Vdc 26 mA

Stand-By Current (typ. Vdc @ 25°C):

CANBus: 32-41 mA
TTL: 23-30 mA

Switching Time:

15 ms maximum

Operating Temperature:

-25°C to +75°C

Storage Temperature:

-55°C to +85°C

Mechanical Life Cycles:

5,000,000 minimum

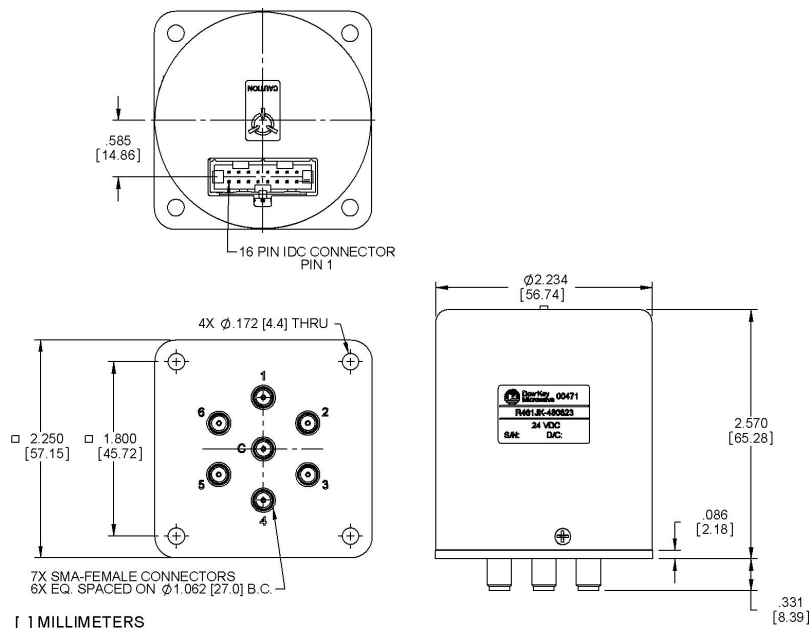
Vibration, Operating:

7G RMS, 20-2000 Hz

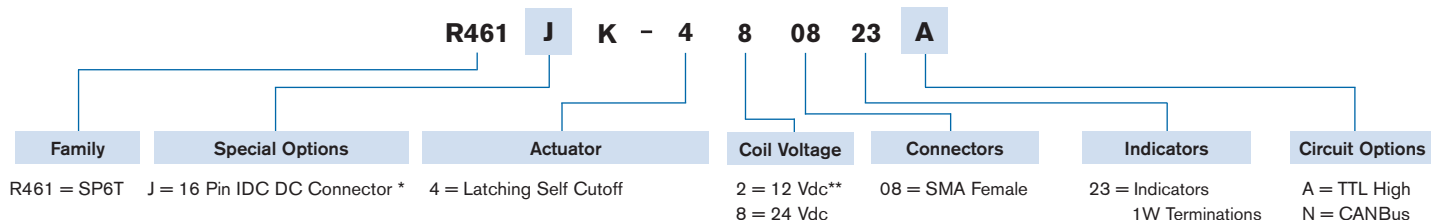
Nominal Weight:

8.8 oz. (250 g.)

Mechanical



Part Number Selector



* Not used with CANBus option
** Available with CANBus option only