



"There Is No Substitute for Experience"

DOW-KEY MICROWAVE MS, MP, CB Matrix Series



MS-2U18S-4/6T-ENET CAN BUS RF SWITCH MATRIX

Operator's Manual

Rev 1

THE RF/MICROWAVE SWITCHING TECHNOLOGY SOLUTION COMPANY

Copyright © Dow-Key Microwave Corporation 2010, all rights reserved.

Information in this publication supersedes that in all previously published material. Specifications and price change privileges reserved.

Printed in the U.S.A.

Dow-Key is a registered trademark of Dow-Key Microwave Corp.

Document Number: 49101-209 Revision 1



4822 McGrath Street, Ventura, CA 93003

Tel: (805) 650-0260 Fax: (805) 650-1734

Visit at www.dowkey.com

WARRANTY

Dow-Key Microwave Corporation warrants this product to be free from defects in material and workmanship for a period of 1 year from date of shipment. This warranty does not apply to defects resulting from product tampering or modification without Dow-Key's express written consent. This warranty also does not apply to software, non-rechargeable batteries, power supplies, or problems arising from normal wear or failure to follow instructions.

To exercise this warranty, contact Dow-Key Microwave headquarters in Ventura, California. You will be given prompt assistance and return instructions. Send the product, transportation prepaid, to the Dow-Key headquarters. Repairs will be made and the product returned within the quoted period of time, transportation prepaid. Repaired or replaced products are warranted for the balance of the original warranty period, or at least 90 days.

NEITHER DOW-KEY MICROWAVE CORPORATION NOR ANY OF ITS EMPLOYEES SHALL BE LIABLE FOR ANY DIRECT, INDIRECT, SPECIAL, INCIDENTAL OR CONSEQUENTIAL DAMAGES ARISING OUT OF THE USE OF ITS INSTRUMENTS AND SOFTWARE EVEN IF DOW-KEY MICROWAVE CORPORATION HAS BEEN ADVISED IN ADVANCE OF THE POSSIBILITY OF SUCH DAMAGES. SUCH EXCLUDED DAMAGES SHALL INCLUDE, BUT ARE NOT LIMITED TO: COSTS OF REMOVAL AND INSTALLATION, LOSSES SUSTAINED AS THE RESULT OF INJURY TO ANY PERSON, OR DAMAGE TO PROPERTY.

Manual Revision History

The revision history shown below lists all revisions and addendums created for this manual. The revision level increases numerically as the manual undergoes subsequent updates. Addendums are released between revisions and contain important change information that the user should incorporate immediately into the manual. When a new revision is created, all addendum associated with the previous revision of the manual are incorporated into the new revision of the manual. Each new revision includes a revised copy of this history page.

Revision 1 (Document Number 49101-209) January 2012
Original Release

Table of Contents

1	General Information.....	1
1.1	Introduction	1
1.2	MS Matrices	2
1.3	MP Matrices	3
1.4	CB Matrices.....	4
1.5	Technical Specifications.....	5
1.6	Safety Precaution.....	6
1.7	Inspection.....	6
1.8	Maintenance.....	6
1.9	Repacking for shipment	6
2	System Layout	7
2.1	Front Panel Layout.....	7
2.2	Rear Panel Layout for 2U models	8
2.3	Rear Panel Layout for 3U models	9
2.4	Rear Panel Layout for 4U models	11
2.5	Top View Layout	13
2.6	RF configuration.....	14
3	Connections	15
3.1	Power Connection.....	15
3.1.1	Line Voltage.....	15
3.1.2	Line Power Connection.....	15
3.1.3	Line Fuse Replacement.....	15
3.2	Ground Connection	16
3.3	RS232 Connection	16
3.4	CAN Bus Connection	17
3.5	Ethernet Connection	18
3.6	USB Port.....	18
4	Configuring the Matrix for Operation	19
4.1	Matrix Configuration	19
4.2	Configuring the Ethernet Connection	19
4.3	Connection to an Ethernet	19
4.4	Testing Ethernet Communication	20
5	Manual (LOCAL) Operation.....	21
5.1	The Touch Screen Interface.....	21
5.2	Main Menu	22
5.2.1	Switching Operations.....	22
5.2.2	Error Operations	24
5.2.3	System Settings.....	25
5.2.4	Ethernet Options.....	27
5.2.5	LCD Options	28
5.2.6	Set RS232 Baud Rate	28
5.2.7	Set GPIB Address	28

6	Remote Operation.....	29
6.1	Introduction to SCPI.....	29
6.2	Command Syntax Structure.....	29
6.3	Command Separators and conventions.....	30
6.4	Common Commands.....	31
6.4.1	*IDN?.....	31
6.4.2	*OPC?.....	32
6.4.3	*RST.....	33
6.5	System Commands.....	33
6.5.1	SYST:ERR?.....	33
6.5.2	SYST:IPADDRESS?.....	37
6.5.3	SYST:IPADDRESS xxx.yyy.zzz.aaa.....	37
6.5.4	SYST:TCPPOINT?.....	38
6.5.5	SYST:TCPPOINT x.....	38
6.5.6	SYST:GATEWAY?.....	39
6.5.7	SYST:GATEWAY xxx.yyy.zzz.aaa.....	40
6.5.8	SYST:MASK?.....	40
6.5.9	SYST:MASK xxx.yyy.zzz.aaa.....	41
6.5.10	SYST:MACADDRESS?.....	41
6.5.11	SYST:SERIALNUMBER?.....	42
6.5.12	SYST:TIMEOUT?.....	42
6.5.13	SYST:TIMEOUT x.....	43
6.5.14	SYST:STATUS?.....	44
6.6	Switch [Module] Command Set.....	45
6.6.1	:SWITCh<id>[:VALue] <number>.....	45
6.6.2	Setting switch x to position n.....	46
6.6.3	Requesting Switch x current position.....	47
6.7	DHCP Command Set.....	48
6.7.1	SET:DHCP ON or SET:DHCP OFF.....	48
6.7.2	GET:DHCP.....	48
7	Web Page Server (HTTP).....	51
7.1	Web Page Server Control.....	51
7.2	Matrix Control.....	52
7.3	Matrix Configuration.....	53
7.4	Matrix Status.....	54
	Appendix A.....	55
	Technical Specifications.....	55
	Appendix B.....	56
	RF Configuration.....	56

1 General Information

1.1 Introduction

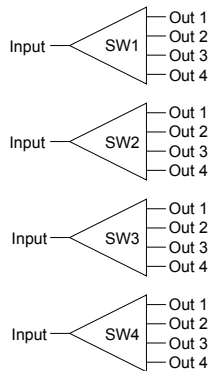
The Dow-Key Microwave MS, MP, CB Switch Matrix series are electromechanical RF matrices. They come equipped with an Ethernet port which allows the user to easily access the matrix from anywhere in the world via TCP/IP on 100BaseT networks. Other interfaces included are an RS-232 port, an USB (used as virtual serial port) and a CAN Bus port. Any model 2 RU or higher also comes equipped with a touch screen LCD front panel display for manual (Local) operation. These models are not intended to be used to power or control anything other than Dow-Key supplied switches. Connection of other CAN Bus products or other devices not described herein will void quality certifications and the warranty.

This user manual covers all three matrix series since most features are the same among the various models. The user shall focus on the matrix series of interest and skip any section that does not pertain to his matrix.

Information specific to your model (like technical specifications and RF configuration) can be found in appendices at the end of this manual.

1.2 MS Matrices

MS-Series stands for **Multiple Switches**. It is a matrix where a number of independent switches are populated on the rear panel or inside the matrix enclosure. From an RF point of view the switches are not interconnected and all switch's RF ports are available to the user on the rear panel of the matrix. Depending on the size of the switch and the quantities needed, the matrix size can grow from 1RU to 4RU (or even larger).



Example of an MS series matrix with four independent SP4T switches.

Part Numbering Examples:

MS-2U18S-4/X-ENET Is a **Multi Switch** matrix with following characteristics:
2U, 18 GHz, SMA, 4 transfer switches, ENET

MS-2U26S-4/6T-ENET Is a **Multi Switch** matrix with following characteristics:
2U, 26 GHz, SMA, 4 Terminated SP6T, ENET

MS-4U18N-12/10-ENET Is a **Multi Switch** matrix with following characteristics:
4U, 18 GHz, N connectors, 12 SP10T, ENET

The part numbering is interpreted as follows:

MS-[chassis size][frequency][connector]-[number of switches]/[type of switch]-[remote control type]

[chassis size]: 1U | 2U | 3U | 4U etc.
 [frequency]: 12 (for 12.4 GHz) | 18 (for 18 GHz) | 26 (for 26.5 GHz) | 40 (for 40 GHz)
 [connector]: B (for BNC) | N (for N) | S (for SMA) | K (for 2.9 mm)
 [number of switches]: 1 | 2 | 3 | 4 | 5 |... | 16 (or more if chassis size allows)
 [type of switch] : 2T (terminating one port DPDT →terminated SPDT) | X (for DPDT)
 | 4 (for SP4T) | 6 (for SP6T) | 8 (for SP8T) | 10 (for SP10T) | 12 (for SP12T).
 If switch type is terminated, add 'T' to the number.
 Example: 6T (terminated SP6T)

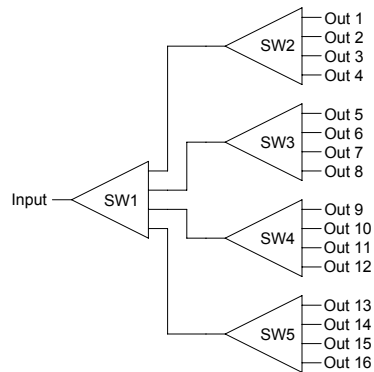
[number of switches]/[type of switch]: If different switch types are combined, repeat this section as needed. **Example: MS-1U18S-2/X-2/6T-ENET**

[remote control type]: ENET (for Ethernet, RS-232, USB) | GPIB (for IEEE-488, USB)

1.3 MP Matrices

MP-Series stands for **Multiplexer**. It is a matrix with one input connecting to many outputs (only one at the time) or, since the RF switches are bi-directional, many inputs connected to one output (only one at the time).

The switches are populated either on the rear panel or inside the matrix chassis. From an RF point of view the switches are interconnected and all input/output RF ports are available to the user on the rear panel of the matrix. Depending on the size of the switch and the quantities needed, the matrix size can grow from 1RU to 4RU (or even larger).



Example of an MP series matrix with 1 input/output and 16 outputs/inputs.

Part Numbering Examples:

MP-4U18S-100-GPIB Is a **Multi Plex** matrix with following characteristics:
4U, 18 GHz, SMA, 100 outputs, GPIB

MP-4U18S-20-ENET Is a **Multi Plex** matrix with following characteristics:
4U, 18 GHz, SMA, 20 outputs, ENET

MP-[chassis size][frequency][connector]-[number of ports]-[remote control type]

[chassis size]: 1U | 2U | 3U | 4U etc.

[frequency]: 12 (for 12.4 GHz) | 18 (for 18 GHz) | 26 (for 26.5 GHz) | 40 (for 40 GHz)

[connector]: B (for BNC) | N (for N-type) | S (for SMA) | K (for 2.9 mm)

[number of ports]: 20 | 30 | 40 | 50 | 60 | 70 | 80 | 90 | 100 (and more ports if chassis size allows)

If ports are internally terminated, add 'T' to the number.

Example: 20T, .. , 100T

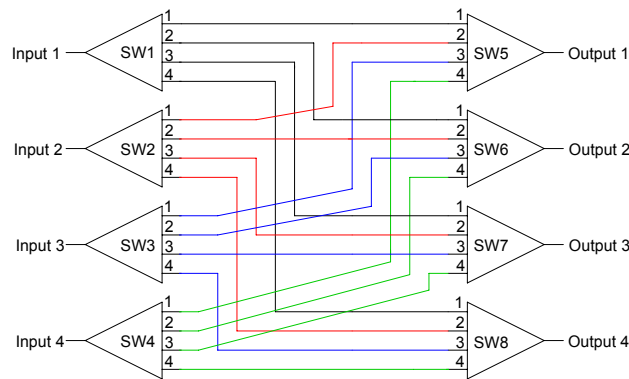
[remote control type]: ENET (for Ethernet, RS-232, USB) | GPIB (for IEEE-488, USB)

Note: There is always one only input and a certain number of outputs. So no need to indicate the '1' (for the input).

1.4 CB Matrices

CB-Series stands for **Crossbar**. It is a matrix with several inputs connecting to several outputs. Only one input can be connected to one output at any given time.

The switches are populated inside the matrix chassis and are interconnected so that any input can connect to any output and vice versa. All input/output RF ports are available to the user on the rear panel of the matrix. Depending on the size of the switch and the quantities needed, the matrix size can grow from 2RU to 4RU (or even larger).



Example of a CB series matrix with 4 input and 4 outputs.

Part Numbering Examples:

CB-4U18S-10X10-ENET Is a **CrossBar** matrix with following characteristics:
4U, 18 GHz, SMA, 10 inputs 10 outputs, ENET

CB-4U18N-8X8-ENET Is a **CrossBar** matrix with following characteristics:
4U, 18 GHz, N connectors, 8 inputs 8 outputs, ENET

CB-2U18S-4X4-ENET Is a **CrossBar** matrix with following characteristics:
2U, 18 GHz, SMA, 4 inputs 4 outputs, ENET

CB-[chassis size][frequency][connector]-[number of inputs]X[number of outputs]-[remote control type]

[chassis size]:	1U 2U 3U 4U etc.
[frequency]:	12 (for 12.4 GHz) 18 (for 18 GHz) 26 (for 26.5 GHz) 40 (for 40 GHz)
[connector]:	B (for BNC) N (for N) S (for SMA) K (for 2.9 mm)
[number of inputs]:	2 3 4 5 ... 10 12 16 20 (or more if chassis size allows)
[number of outputs]:	2 3 4 5 ... 10 12 16 20 (or more if chassis size allows)
[remote control type]:	ENET (for Ethernet, RS-232, USB) GPIB (for IEEE-488, USB)

1.5 Technical Specifications

Refer to appendix A

1.6 Safety Precaution

Safety precautions should be observed before using this product and any associated instrumentation. This product is intended for use by qualified personnel who recognize the safety precautions required to avoid possible injury.

1.7 Inspection

The Matrices were carefully inspected, both electrically and mechanically before shipment. After unpacking all items from the shipping carton, check for any obvious signs of physical damage that may have occurred during transit. Report any damage to the shipping agent immediately. Save the original packing carton for possible future reshipment. The following items are included with every Model matrix order.

- Switch matrix
- Switch matrix Operation Manual
- Power Cord, Part Number 40203-005

1.8 Maintenance

The matrix requires no periodic maintenance. Should any problems arise, contact Dow-Key Microwave immediately for necessary repairs. These systems are not field repairable.

1.9 Repacking for shipment

Should it become necessary to return the matrices for repair, carefully pack the unit in its original packing carton or the equivalent, and follow these instructions:

- Call the Repair Department at 1-805-650-2327 for a Return Material Authorization (RMA) number.
- Advise as to the warranty status of the matrix.
- Write ATTENTION REPAIR DEPARTMENT and the RMA number on the shipping label.

2 System Layout

2.1 Front Panel Layout

Figure 2-1 shows the 2U, 3U and 4U Model general layout, which includes:

- 2 handles
- A touch screen LCD

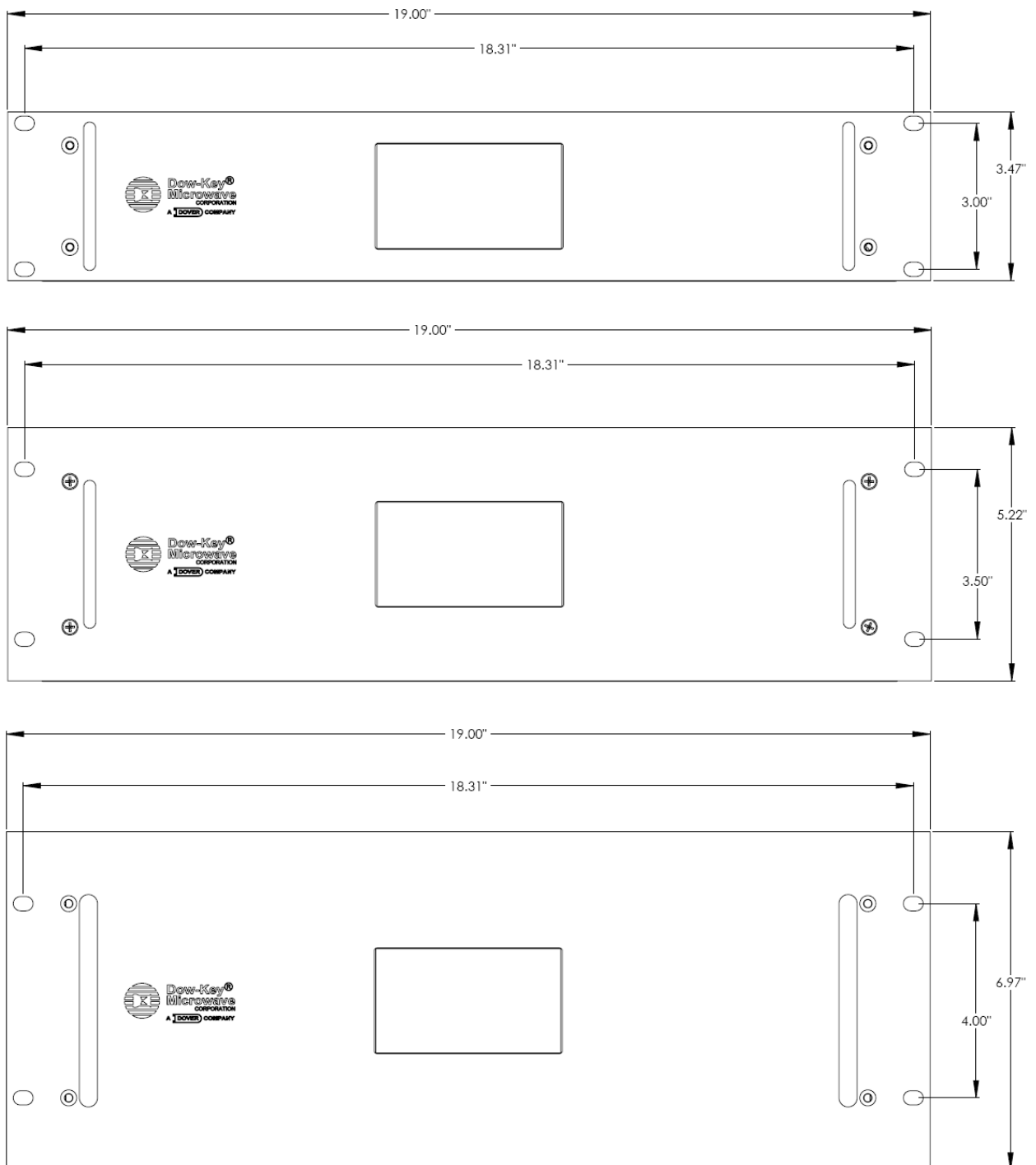


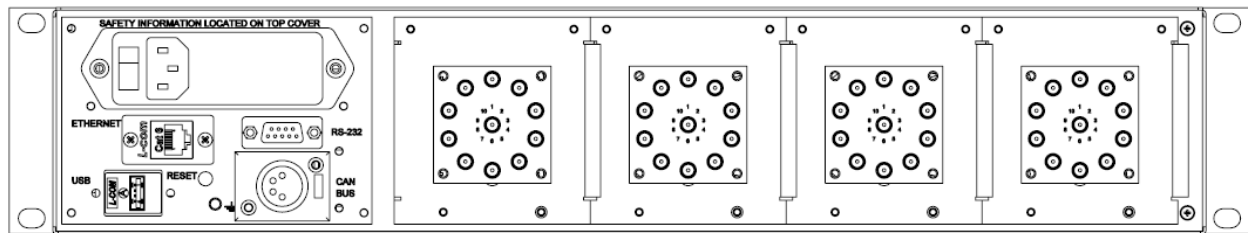
Figure 2-1, 2U, 3U and 4U Front Panel Layout

2.2 Rear Panel Layout for 2U models

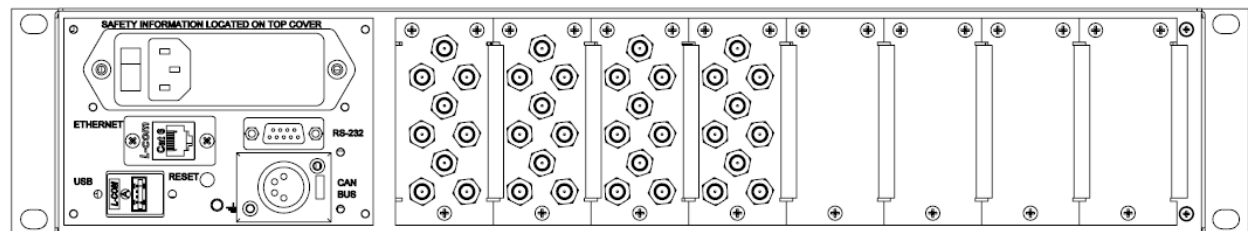
Figure 2-2 shows the general layout of the rear panel of a variety of 2U models. All models have common parts which include:

- Power Entry Module with built in Fuse
- Chassis Ground Post
- 9-Pin D-Sub Female RS232 Connector
- 4-Pin XLR Female CAN Bus Connector
- RJ-45 Ethernet Connector
- USB type A Connector

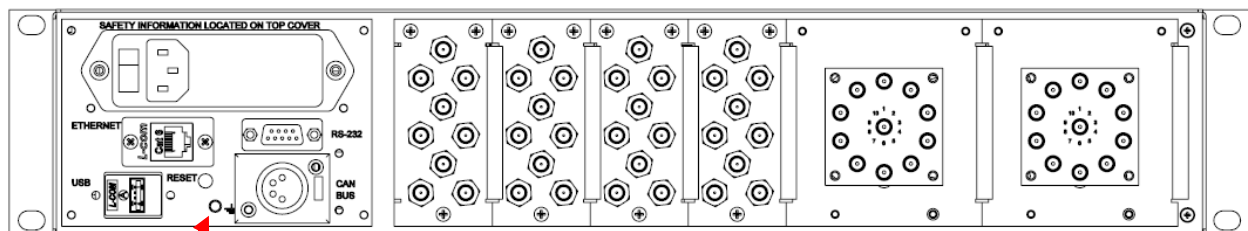
Other parts that are not common to all models are Coaxial RF switches and/or RF connectors.



2U MS series (with external switches)



2U MS series (with internal switches) or MP series or CB series



2U MS series combined with MP series or CB series

GND stud

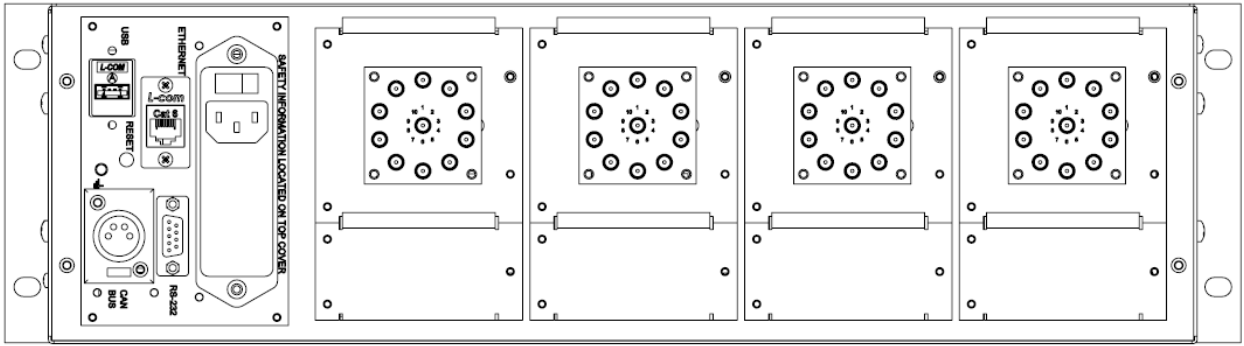
Figure 2-2, Various 2U Models Rear Panel Layout

2.3 Rear Panel Layout for 3U models

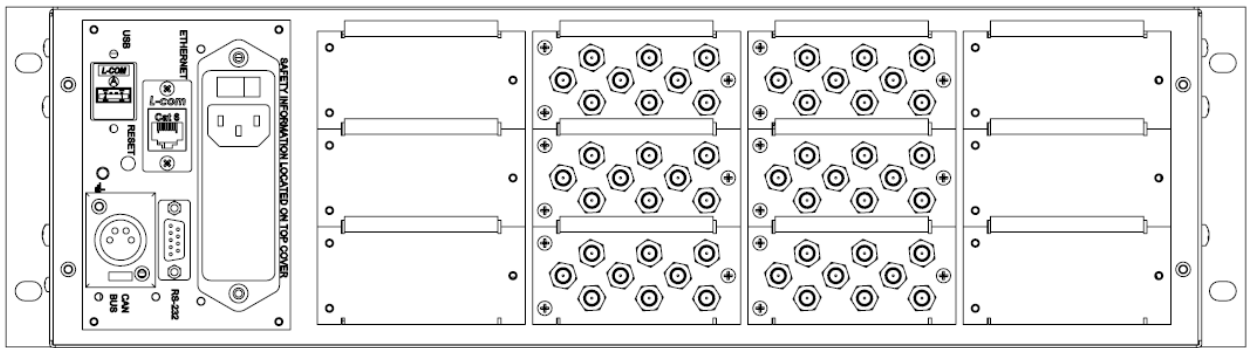
Figure 2-3 shows the general layout of the rear panel of a variety of 3U models. All models have common parts which include:

- Power Entry Module with built in Fuse
- Chassis Ground Post
- 9-Pin D-Sub Female RS232 Connector
- 4-Pin XLR Female CAN Bus Connector
- RJ-45 Ethernet Connector
- USB type A Connector

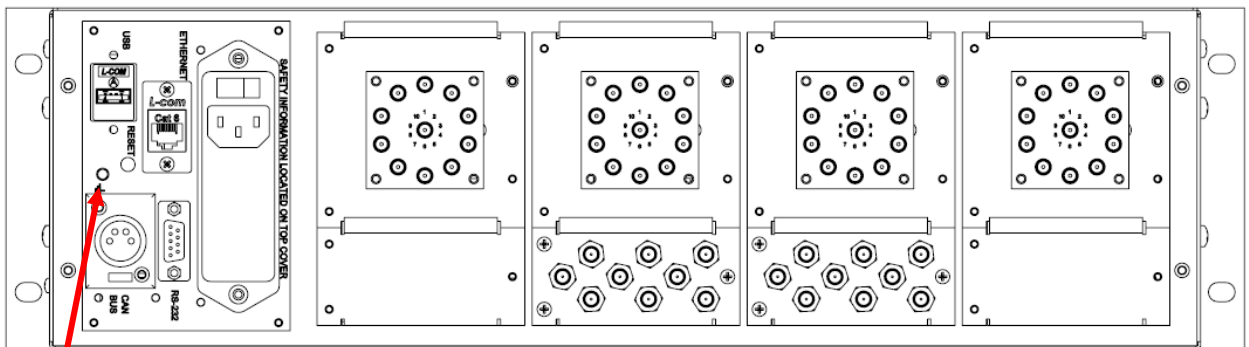
Other parts that are not common to all models are Coaxial RF switches and/or RF connectors.



3U MS series (with external switches)



3U MS series (with internal switches) or MP series or CB series



3U MS series combined with MP series or CB series

GND stud

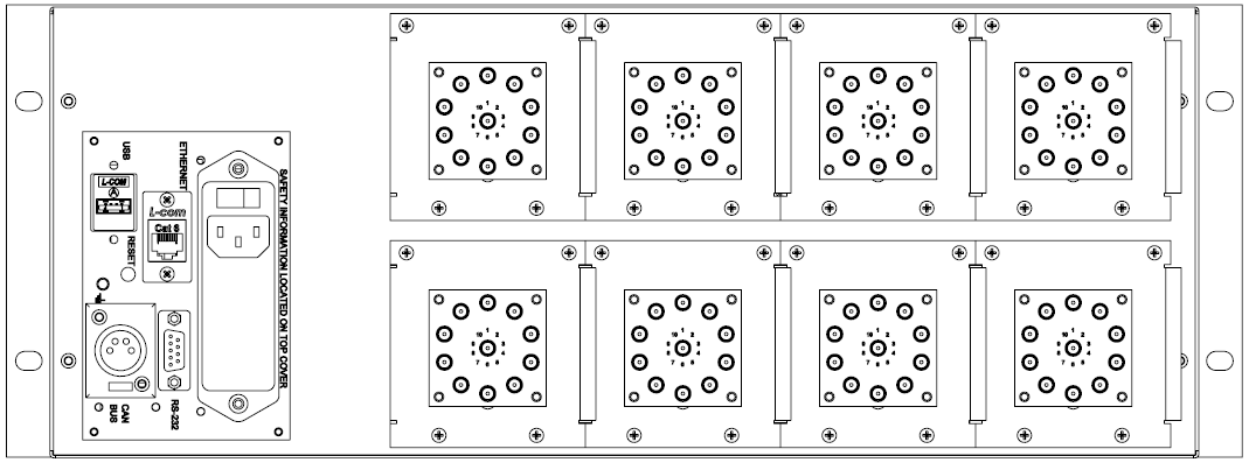
Figure 2-3, Various 3U Models Rear Panel Layout

2.4 Rear Panel Layout for 4U models

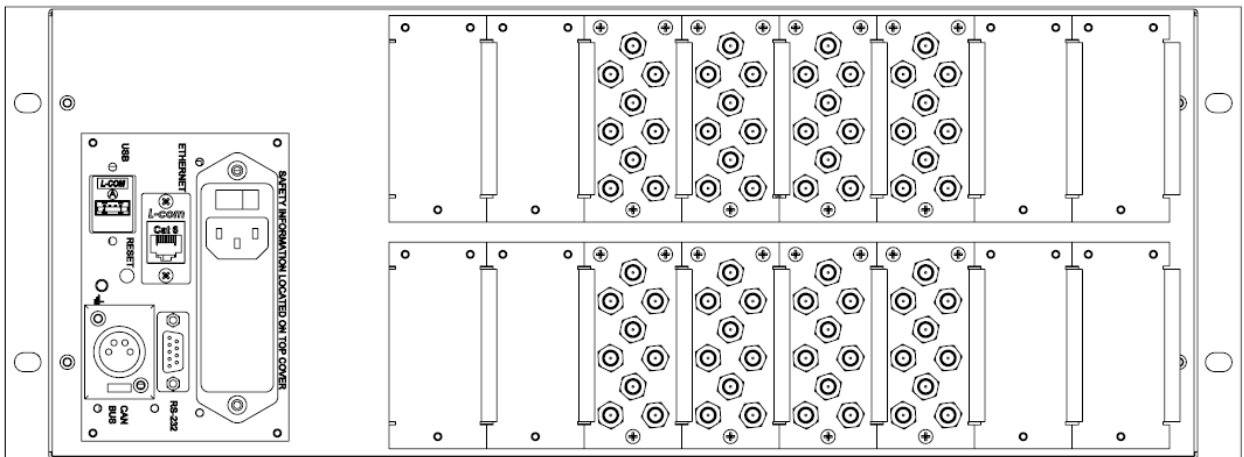
Figure 2-4 shows the general layout of the rear panel of a variety of 4U models. All models have common parts which include:

- Power Entry Module with built in Fuse
- Chassis Ground Post
- 9-Pin D-Sub Female RS232 Connector
- 4-Pin XLR Female CAN Bus Connector
- RJ-45 Ethernet Connector
- USB type A Connector

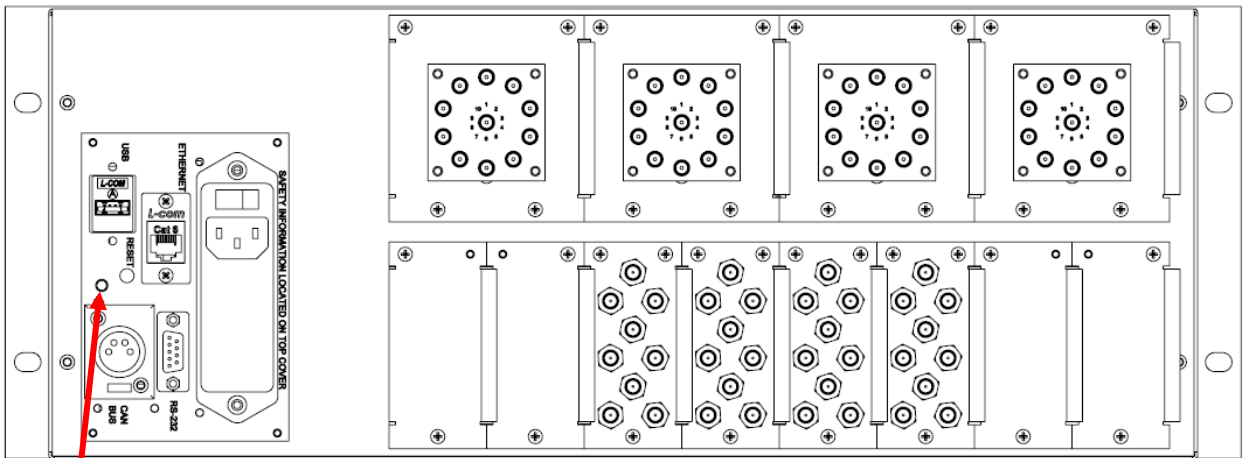
Other parts that are not common to all models are Coaxial RF switches and/or RF connectors.



4U MS series (with external switches)



4U MS series (with internal switches) or MP series or CB series



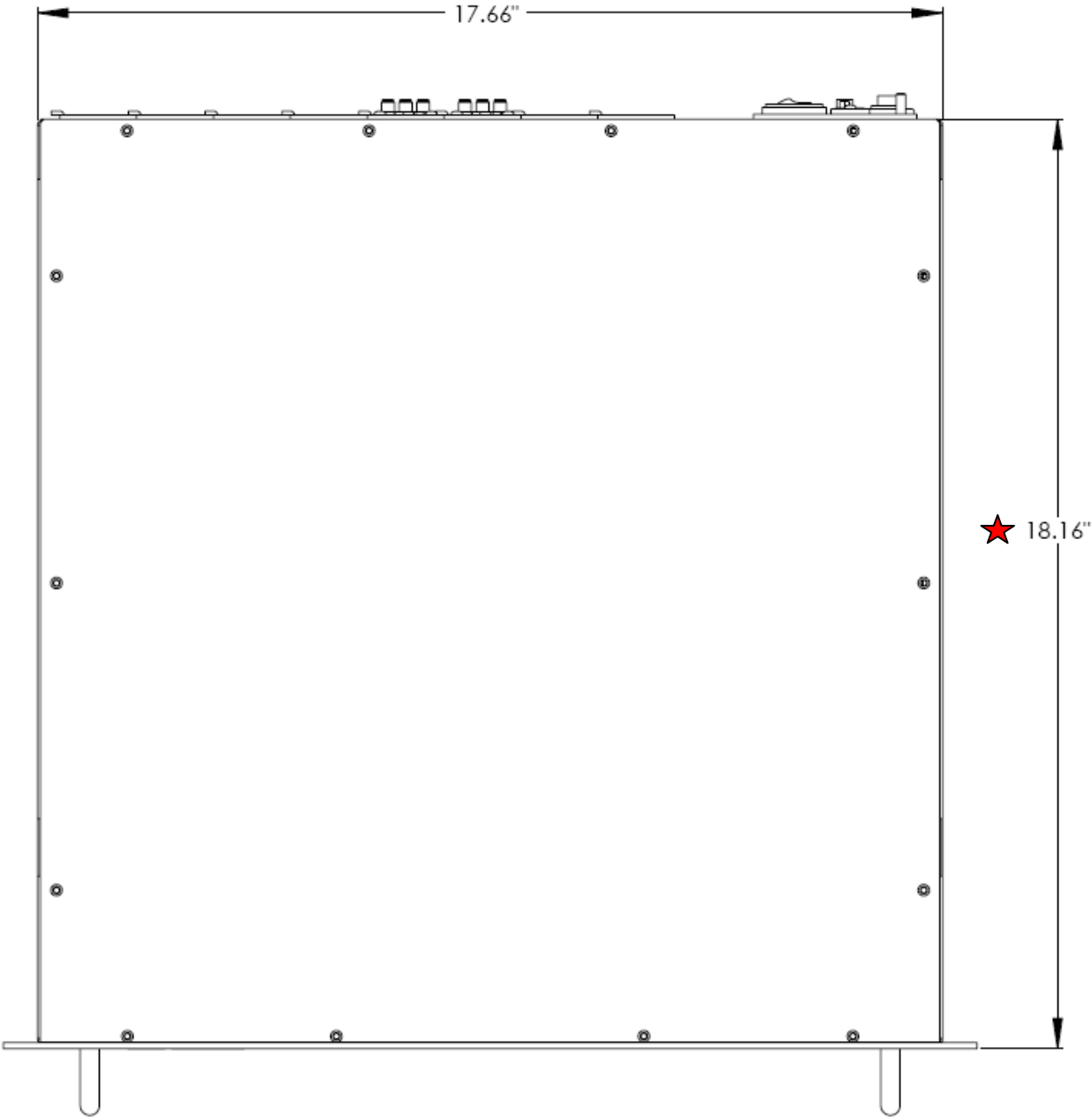
4U MS series combined with MP series or CB series

GND stud

Figure 2-4, Various 4U Models Rear Panel Layout

2.5 Top View Layout

Figure 2-5 shows the top view layout of all models.



★ Note: The dimension indicated on the drawing is for 3U and 4U models. For 2 U models the depth dimension is 15.625" D (without handles)

Figure 2-5, Top View of 2U, 3U and 4U Models

2.6 RF configuration

Refer to appendix B.

3 Connections

3.1 Power Connection

3.1.1 Line Voltage

The matrix operates from a line voltage in the range of 110V to 240V at a frequency of 50 or 60Hz. Line voltage selection is automatic.

CAUTION: *Operating the unit on an incorrect line voltage may cause damage, possibly voiding the warranty.*

3.1.2 Line Power Connection

Perform the following steps to connect the matrix to line power:

1. Connect the female end of the supplied power cord to a grounded AC receptacle on the rear panel.
2. Connect the other end of the supplied power cord to a grounded AC outlet.

WARNING: *The power cord supplied with the matrix contains a separate ground for use with grounded outlets. Failure to use a grounded outlet may result in personal injury or death due to electric shock.*

3.1.3 Line Fuse Replacement

A rear panel fuse protects the power line input of the matrix. If the line fuse needs replacement, perform the steps below:

WARNING: *Disconnect the line cord from the unit before changing the line fuse.*

1. The fuse is located in a holder in the power module unit above the AC receptacle (figure 3-1). At top is a small tab, use a small bladed screwdriver to release the fuse holder.
2. Slide the fuse holder out to gain access to the fuse carrier and fuse.
3. Remove the carrier with the blown fuse, and replace with the correct type listed in Table 3-1.

CAUTION: *For continued protection against fire or unit damage, replace the fuse only with the type and rating listed.*

4. Install the fuse carrier in the fuse holder, then insert the fuse holder back in the power entry module.

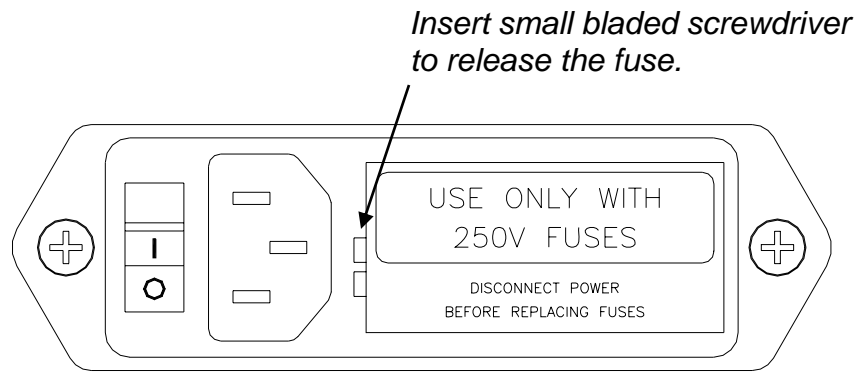


Figure 3-1, Power Entry Module

Line Voltage	Fuse Rating	Manufacturer	Manufacturer Part No.
110-240V	1A, slow blow, 250Vac, 1/4" x 1-1/4"	Bel Fuse Inc.	3SB 1-R

Table 3-1, AC Line Fuse Information

3.2 Ground Connection

The rear panel GND ground screw (refer figures 2-2, 2-3 and 2-4) should be connected to safety earth ground using #18 AWG or larger wire.

3.3 RS232 Connection

The switch matrix may be operated over this connection (See Section 6 for a description of the commands). The RS232 connection is configured with these default settings: 9600 Baud, 8 bit data, no parity, 1 stop bit.

The baud rate can be changed thru the touch screen LCD to:
1200, 2400, 4800, 9600, 19200, 38400, 57600, 115200 bits/sec

Figure 3-2 and Table 3-2 show the pin numbers and functions for the RS232 female connector.

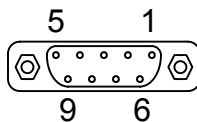


Figure 3-2, RS232 Female Connector Pin Numbers

Pin 1	NC
Pin 2	NC
Pin 3	Transmit
Pin 4	NC
Pin 5	Receive
Pin 6	NC
Pin 7	NC
Pin 8	NC
Pin 9	Ground

Table 3-2, RS232 Female Connector Pin Functions

3.4 CAN Bus Connection

This connection allows the matrix controller to be easily interfaced to another Dow-Key Microwave Switch Matrix, using a one-to-one (straight through) cable. However, the Matrix being interfaced must not have any internal, intelligent controller; it must be a simple RF Switch Matrix. Furthermore, the switches in the matrix being interfaced must have CAN ID's unique to any others connected to the matrix. See Section 4 for more information.

Care must also be taken to limit the current draw on the +12 VDC to a maximum of 7 Amps.

Figure 3-3 and Table 3-3 show the pin numbers and functions for the CAN Bus connector.

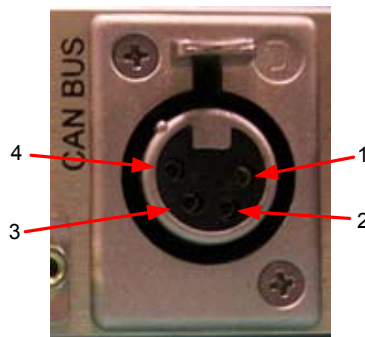


Figure 3-3, CAN Bus Connector Pin Numbers

The mating connector is Deltron 701-0400. The pin outs (embossed on connector faces) are:

1. +12 VDC, 7A max (see individual switch data sheets for current draw)
2. CAN LO
3. CAN HI
4. +12 VDC Return (GND)

Table 3-3, CAN Bus Connector Pin Functions

3.5 Ethernet Connection

The matrix comes equipped with an Ethernet port (RJ45 connector) which allows the user to easily access the matrix from anywhere in the world via TCP/IP on 100BaseT networks. See Section 4 and Section 6 for descriptions regarding how to connect to, configure, and operate the matrix over this 100BaseT Ethernet connection.

3.6 USB Port

Connecting the matrix to a PC's USB port should result in a "Found New Hardware" event. Follow the instructions until prompted for the new hardware device's driver, which may be located on the CD shipped with the matrix.

After installation, the matrix's USB port will appear as a virtual serial port. Communicate to this port as you would on any RS 232 serial port. See sections 3.3 and 6 for more details.

4 Configuring the Matrix for Operation

4.1 Matrix Configuration

The ‘brain’ inside Dow-Key Matrices, referred to as the “Matrix Controller”, has been designed to be as general as possible in regards to how many switches of what positions it may control. Therefore, the matrix must first be informed as to the set of switches it is able to control before it can operate successfully, and this information must be updated as switches are added and deleted to the matrix or connected to the CAN bus port on the rear of the matrix (see section 3.4). The knowledge of what switches are to be controlled and how many positions each of those switches has is known as the matrix’s Configuration Data.

In addition to switch information, the Matrix Configuration also contains other information such as the base MAC address, unit’s Serial Number, alarm enabling, Model Name, etc. This information must remain intact for the matrix to operate properly.

The matrix configuration is already performed at the factory and does not need to be done by the user unless the Matrix Controller board has been replaced.

Adding and removing switches (see sections 5.2.3 and 7.3) automatically updates the matrix configuration. No further action is required by the user.

4.2 Configuring the Ethernet Connection

All devices connected to an Ethernet and communicating via TCP/IP must have a unique IP address and TCP Port number.

The DowKey matrices are programmed at the time of its manufacture to have a static IP address (Dynamic Host Configuration Protocol is OFF. See sections 5.2.4 and 6.7 for more details on how to obtain an IP address dynamically).

When the IP address is obtained dynamically (DHCP is ON) the IP address is displayed for a few seconds at power up. See section 5.2.4 to display the IP address after boot up is completed.

The matrix is programmed at the time of its manufacture to have the following default settings:

- IP Address: 200.169.200.xxx (where xxx is between 001-255)
- TCP Port Number: 10

See Sections 5.2.4 for instructions on how to set the IP Address and TCP Port Numbers to other values.

4.3 Connection to an Ethernet

The use of a standard “Straight Through” Ethernet cable is required to connect the matrices to an Ethernet LAN hub. Connection to a single computer requires the use of “Crossover” Ethernet cable.

4.4 Testing Ethernet Communication

The matrix's ability to communicate should be tested once it has been configured and connected to an Ethernet. Assuming the matrix's default IP address has not been changed, and assuming the connection has been made with a standalone personal computer running some version of Microsoft Windows© whose IP address is 200.169.200.xxx (where xxx is anything other than 181), select

Start>Run

and type

Ping 200.169.200.181

A valid and working connection will yield a response similar that shown in the example below:

```
C:\>ping 200.169.200.181
```

```
Pinging 200.169.200.181with 32 bytes of data:
```

```
Reply from 200.169.200.181: bytes=32 time=5ms TTL=64
```

```
Reply from 200.169.200.181: bytes=32 time=2ms TTL=64
```

```
Reply from 200.169.200.181: bytes=32 time=2ms TTL=64
```

```
Reply from 200.169.200.181: bytes=32 time=3ms TTL=64
```

```
Ping statistics for 200.169.200.181
```

```
Packets: Sent=4, Received=4, Lost=0 (0% loss)
```

```
Approximate round trip times in milliseconds:
```

```
Minimum=2ms, Maximum=5ms, Average=3ms
```

The matrix's Ethernet interface was designed to operate with common network utilities and drivers. If the Matrix fails to communicate, contact your network administrator for additional assistance. If your network administrator is unable to locate the problem, please contact Dow-Key Microwave Corporation at 1-805-650-2327.

5 Manual (LOCAL) Operation

5.1 The Touch Screen Interface

Power On:

Position the rocker switch on the rear panel of the Matrix to the on position (Figures 2-2, 2-3 and 2-4) to turn on the matrix.

! Note: The booting sequence will last up to 1 minute in which the LCD can at times appear blank.

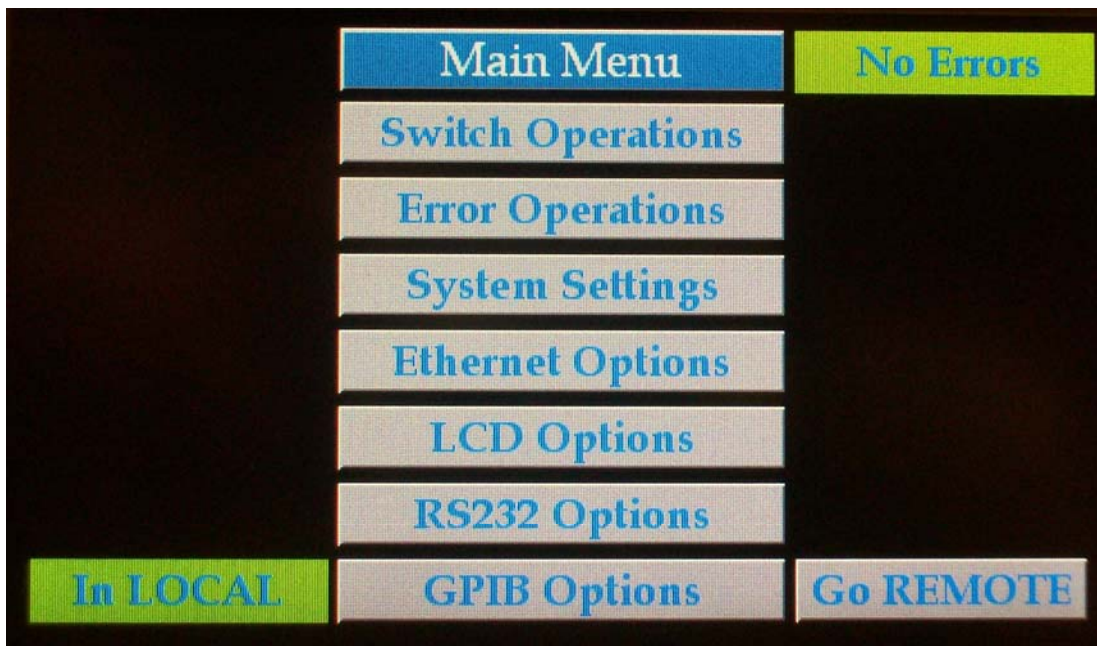
The matrix will power up in LOCAL Operating Mode. LOCAL Operating Mode means that the matrix is receiving commands from the front panel (LCD/Touch Screen).

When in LOCAL Operation Mode the matrix will switch automatically in REMOTE mode as soon as commands coming from a remote control computer are received. It will not accept any local commands until the operator switches to LOCAL mode by pushing the 'Go Local' button on the LCD.

As stated before, to switch to REMOTE Operation Mode the operator needs to send a command by means of a remote control computer or push on the 'Go Remote' button on the LCD.

All LOCAL operation of the matrix is accomplished via the front panel's Touch Screen LCD. Regions that respond to touches are called Active Areas or Buttons.

IMPORTANT NOTE: The touch screen is best operated with a stylus, rather than a fingertip. The LCD will respond better to a taping action rather than just touching it.



The figure above shows the matrix LCD touch screen (sometimes referred to as the "User Interface", or "UI") at the main menu screen.

Most buttons have a gray background, while indicators will be either green or red. All screens, with exception of the 'Main Menu' screen, will have a green 'back' button to return to the previous screen.

In the above picture the matrix is indicating that there are No Errors (see green indicator) and the matrix is in LOCAL mode (see green indicator).

If an error condition is detected the green 'Error' indicator will illuminate red.

The LCD in the figure above shows the top level of the matrix's operational screen, which happens to be a menu; the gray buttons are used to select menu items. Other screens encountered allow the operator to modify various parameters' values; all such "data fields" are presented with a currently set or default value blinking, prompting the operator to modify the value. Some screens present multiple data fields, and a virtual keypad with arrows will appear to navigate around them and change the values.

! Note:

To preserve the life of the LCD, it has a 'screen saver' feature. After 5 minutes the LCD backlight will turn off. To turn it back on, tap anywhere in the regions where the virtual buttons are located. Since all screens have buttons on the very bottom of the screen, the bottom center area is recommended for this purpose.

The various screens encountered in the matrix's operation contain the following controls:

5.2 Main Menu

5.2.1 Switching Operations

Switch Operations Menu

Set Switch Positions

View the currently set position and change the position of a switch who's ID has been configured to the matrix. Use the arrows to change switch and position numbers. The other numeric keys are not meant for this purpose.

Refer to Appendix B to set the RF switches in the correct desired positions.

Current Positions

View the currently set positions of all switches whose ID's have been configured to the matrix. This screen can show a maximum of 12 switches at a time; press NEXT button to view the next set of a maximum of 12. Note: the presentation of switch positions is a "one way" experience in that the operator can only view successively greater ID's. BACK will bring the Operator back to the Switching Menu.

Remember that a switch position reported as 255 (0xFF) is meant to mean “position unknown”, and is often the result of a switch not responding to a query for position.

Position 0 means “open” (the switch is not closed to any of its RF ports).

Switching History

View the last 10 switching actions. The latest action is presented first.

Save Positions

Save to non-volatile memory the state of the positions of all switch ID's configured to the matrix, as 1 through 30.

Recall Positions

Recall from non-volatile memory the state of the positions of all switch ID's configured to the matrix, saved as 1 through 30, and set the positions of those switches.

Clear Positions

Cause all switches configured to the matrix to assume their open positions (position 0). Note that all Dow-Key switches have “open” defined but not all switch types have an actual open position, such as a transfer switch. In this case “open” means “close on its default position 1”.

Cycle Positions

Step all switches configured to the matrix through all of their positions. NOTE: the Cycle Position function is intended for use at the Dow-Key factory during the assembly process. In fact, the Cycle Position function will generate errors when commanding a Transfer switch to switch from position 0 to position 1, which may be ignored. For this reason, the Operator is discouraged from exercising Cycle Positions.

5.2.2 Error Operations

View the contents of the Error Log (see Section 6.5.1). Each entry is displayed with the oldest being first (First In First Out), showing the Error Record Number (its place in the Error Log), an associated Error Code, an associated Error Data, and a text explanation of the Error.

The Error Data contains various parameters associated with certain Errors. For instance, an Error Code 10 “Switch Did Not Respond” will show the offending switch ID in the Error Data field.

As each error is being read (displayed locally or queried remotely) it will also be removed from the Error Log.

5.2.3 System Settings

System Settings Menu

! Important Note:

The matrix controller is designed to offer the maximum expandability and flexibility possible and therefore has features common to other Dow-Key matrix models. The here described 'Add', 'Delete' and 'Find Switch ID' features are some of those that, although available and fully functioning, should only be used if needed and appropriate.

Switches may be added and deleted from the Matrix Configuration using these commands.

For those matrix models with a custom or fixed RF configuration (in other words where the internal RF switches and its connections are defined on a custom bases or are established and fixed by design), no switch shall be added or removed from the matrix configuration. Not following this instruction will result in a non working matrix!

System Information

View the Dow-Key Matrix Product's Model Number, its Serial Number (set at factory), and the Dow-Key part number and revision level of firmware running on the Matrix Controller.

Add Switch

Add switches to the Matrix Configuration (see Section 4.1).

Delete Switch

Delete switches from the Matrix Configuration (see Section 4.1).

Find Switch ID

Discover and view the ID of any switch by following these steps:

1. Using a matrix with at least one unused CAN Bus connector, and leaving the switch in question unconnected, select **Main Menu>System Settings>Find Switch ID**. The screen will indicate that no switch is connected.
2. Connect the switch in question. The screen will now display the unknown switch ID. NOTE: occasionally, the switch will not immediately report its ID; in this case, simply disconnect and reconnect the switch.
3. Multiple switches may be connected and disconnected one at a time while in this screen.

4. NOTE: this operation “puts the matrix’s switches to sleep” thereby rendering the matrix inoperable during the process. ENTER or CLEAR or rebooting returns the matrix to normal.
5. NOTE: proper performance of Find Switch ID relies on the behavior of Dow-Key Switch firmware revision 4 and above – revision 3 and below does not allow “putting the switch to sleep”. So, this feature is best executed on a matrix that does not contain switches with firmware revision 3 or less, or those switches will respond with their ID’s as well as the switch in question. The revision of firmware of any switch configured to the matrix may be learned with **Main Menu>System Settings>Switch Information** (see below).

Temperatures

View current values of a maximum of 4 temperature sensors, and set thresholds at which an Over Temperature alarm should occur. Setting all 4 alarm thresholds to 0° Celsius disables Over Temperature alarms and causes the current temperatures to read out 0° as well; this is the recommended setting for Matrix Products that contain no temperature sensors.

Most standard Models do not feature temperature sensors.

Switch Closure Counts

View the number of times any position of any switch configured to the matrix has been closed upon, to a maximum of 1,000,000.

Switch Information

View the Part Number, Serial Number, Firmware Number, Firmware Revision Level, maximum number of positions, its PCBA Code (factory), and Coil Delay Time in ms (coil command signal pulse length), of any switch configured to the matrix.

Default Settings

This password protected option is used during the assembly process and is not intended for Operator use.

5.2.4 Ethernet Options

Actual changes to the Ethernet variables referred to below will not take effect nor be shown on the front panel until the matrix has been powered down and back up.

See Sections 4 and 6 for more information regarding use of Ethernet to control the matrix.

Ethernet Menu

Set/Acquire IP Address

View and/or modify the current IP Address and Acquisition Mode, Static or Dynamic (DHCP off or on).

Set Subnet Mask

View and/or modify the current Subnet Mask.

Set Gateway

View and/or modify the current Gateway.

Set Port Number

View and/or modify the current Port Number. The factory default is 10.

Set Timeout

View and/or modify the current Timeout settings (in seconds). The factory default is 0 seconds.

The Timeout is used to automatically close the TCP/IP socket after a certain amount of seconds of inactivity on the port.

Note: A settings of 0 seconds means that the timeout is disabled. The TCP/IP socket will never be closed automatically.

5.2.5 LCD Options

This LCD has no adjustable parameters.

5.2.6 Set RS232 Baud Rate

View and select the Serial Port's Baud rate from a set of preselected values from 1200 to 115,200 b/s (see Section 3.3).

Use the arrows to change the baud rate settings. The other numeric keys are not meant for this purpose.

5.2.7 Set GPIB Address

Not applicable to ENET (Ethernet) models.

6 Remote Operation

6.1 Introduction to SCPI

SCPI is a command structure that is based on the IEEE-488.2 specification which Dow-key has adapted to work with Ethernet and RS-232 controls. The matrix has internal software loaded that uses SCPI command structure. SCPI is the abbreviation of Standard Commands for Programmable Instruments. These commands are standard messages for the (remote) control of programmable instruments, which are sent by the Ethernet and/or RS-232 controller. The principal objective of SCPI is to make the programming of a test system easier for the user. When the basic concepts and command structure of SCPI is understood, it will be easy for the user to write or modify a control program for the matrix.

The Socket Type of the matrix is server while your remote control computer is the client.

NOTE: Not all commands for SCPI are compatible with Ethernet and RS-232, only the ones stated in this document.

6.2 Command Syntax Structure

[ROUTe]:SWITCh<id>[:VALue] <number>|MAX

- *Square brackets []* indicate optional keywords or parameters.
- *Braces { }* enclosure parameter choices with a command string
- *Triangle brackets < >* enclose parameters for which you must substitute a value.
- *Vertical bar |* separates multiple parameter choices.

The command syntax shows most commands as a mixture of upper and lower case letters. The upper case letters indicate the abbreviated spelling for the command. For shorter program lines, the abbreviated form is used. For better program readability, the long form is used. For example, in the above syntax statement, ROUT and ROUTE are both acceptable forms. Since both upper and/or lower case letters are acceptable, ROUTE, rout and Rout are all acceptable. Other forms, such as RO and ROU are not acceptable and will generate an error.

NOTE: Each command must be terminated with a carriage return (0x0D) followed by a line feed (0x0A).

e.g. "ROUT:SWITx n\r\n"
"ROUT:SWITx n; SWITx?\r\n"

Where "\r" stands for carriage return (0x0D) and "\n" stands for line feed (0x0A).

6.3 Command Separators and conventions

- A *colon* (:) is used to separate a command keyword from a lower level keyword.
- A *blank space* is used to separate a parameter from a command keyword.
- A *comma* (,) is used if a command requires more than one parameter.
- A *semicolon* (;) is used to combine multiple commands into one message string. Commands from the same *subsystem* are permitted to skip repeating the upper-level keyword.
Eg. "Route:Switch1 8; Switch2 5; Switch3 2"
- A *colon* is used when linking commands from different subsystems into one message string, allowing a new upper-level keyword to be introduced. Since the keyword is optional, such keyword could also be omitted (see example 2).
Only the first command requires the colon. Any subsequent commands of the same subsystem do not require the colon (see example 3).

Ex. 1: "Route:Switch1 8; Switch2 5; Switch3 2; System:Error?"

Ex. 2: "Route:Switch1 8; Switch2 5; Switch3 2; :Error?"

Ex. 3: "Route:Switch1 8; Switch2 5; Switch3 2; :Error?; Timeout 2; status?"

- When linking multiple commands the maximum number of characters supported is 220. The limit of 220 characters is valid in transmission and receiving.
- All messages are in ASCII format (numeric values are represented in decimal format with exception of the MAC address which is expressed in hex format).
- Timing, sequences and action requirements are only shown where applicable and are under the TIMING sub-paragraphs on each command description.
- Any string returned by the matrix is terminated with a carriage return (**0x0D**) followed by a line feed (**0x0A**).

e.g. "ROUT:SWIT2?r\n"

will return

"1r\n"

Where "r" stands for carriage return (0x0D) and "n" stands for line feed (0x0A).

6.4 Common Commands

The following contains the common commands of SCPI that the Ethernet controller is compatible with.

The possible error codes assume that the correct syntax is used and, in case of a multiple command string the string is not too long.

If these conditions are not met, any given command can generate these error codes: 3, 4, 30

6.4.1 *IDN?

Syntax

*IDN?

Result

A string is returned which consists of the following parts:

Model

Model Matrix model number

Possible error codes

None

Example

“*IDN?”

Result

“MS-2U18S-4/6-ENET”

6.4.2*OPC?

Syntax

*OPC?

Description

This query returns an ASCII character “1” when all pending operations have been finished.

Result

ASCII character “1”.

Possible error codes

None

Example 1

*OPC?

Result

“1”

Example 2

:SWIT1 4; SWIT2 4; *OPC?

Result

“0”

Timing

In example 2 the matrix did not have the time to execute the command. Hence a “0” is returned. A subsequent *OPC? will return a “1” as shown in example 1. The timing to execute a command depends on the length of the command (in case of concatenated commands).

As a rule of thumb electromechanical switches require approximately 30ms to switch position. It is safe to consider some safety margin and increase this timing to 40-50 ms when developing the control software.

6.4.3 *RST

Syntax

*RST

Description

This command performs a device reset.

This will set the instrument so that all switches are in the default state.

For SPnT switches the default state is: all RF ports are open.

For a transfer switch the default state is: position 1 is closed.

Possible error codes

11, 12, 13

Timing

As a rule of thumb electromechanical switches require approximately 30ms to switch position. It is safe to consider some safety margin and increase this timing to 40-50 ms before issuing any other command after a *RST.

6.5 System Commands

The following contains the system commands of SCPI that the Ethernet and RS-232 control is compatible with.

6.5.1 SYST:ERR?

Syntax

SYSTem:ERRor?

Description

Query the instrument's error queue. A record of up to N errors is stored in the instrument's error queue. Errors are retrieved in first-in first-out (FIFO) order. The first error returned is the first error that was stored. Each additional error up to N is read by N subsequent queries (one for each error). For this instrument N=10. The error queue has to be read until no more errors are returned, otherwise the error status is not cleared.

Note: some of the listed error codes are here for backwards compatibility with legacy products and other are reserved for future applications. Not all error codes are applicable to this matrix.

Result

String with the following syntax:

code, message

code: Numeric value with the error code (0 if no error).

Message: String with error message.

Example

“SYST:ERR?”

Result was “1, INVALID CHARACTER”, check for more errors.

Description: This error is no longer supported. The error code is maintained and reserved for legacy purposes only.

“SYST:ERR?”

Result was “2, OUTPUT BUFFER OVERFLOW”, check for more errors.

Description: This error is no longer supported. The error code is maintained and reserved for legacy purposes only.

“SYST:ERR?”

Result was “3, TOO MANY COMMANDS”, check for more errors.

Description: The maximum of 220 characters per command line has been exceeded.

SYST:ERR?”

Result was “4, SYNTAX ERROR”, check for more errors.

Description: There is a misspelling in your command or a non-numeric character was included in a command where a number should have been, or use of unrecognized symbols such as %, &, #, etc.

SYST:ERR?”

Result was “5, DATA OUT OF RANGE”, check for more errors.

Description: The value transmitted is not acceptable.

Eg. 1: A non existing switch positions has been commanded. Sending *Route:Switch1 8*. When switch 1 is a SP6T (6 position switch)

Eg. 2: This error code is set if the IP address or MAC address is an invalid one. Sending *SYSTEM:IPADDRESS 55.57.2* would generate this error code since 4 numbers are required for a valid IP address.

SYST:ERR?”

Result was “6, ILLEGAL PARAMETER VALUE”, check for more errors.

Description: This error is no longer supported. The error code is maintained and reserved for legacy purposes only.

SYST:ERR?”

Result was “7, INPUT BUFFER UNDERFLOW”, check for more errors.

Description: This error is no longer supported. The error code is maintained and reserved for legacy purposes only.

SYST:ERR?”

Result was “8, MATRIX SOCKET NOT AVAIL”, check for more errors.

Description: This error is no longer supported. The error code is maintained and reserved for legacy purposes only.

SYST:ERR?"

Result was "10, SWITCH DID NOT RESPOND", check for more errors.

Description: One of the switches did not respond to a position query.

E.g. CAN bus communication failure or damaged switch.

SYST:ERR?"

Result was "11, SWITCH'S RESPONSE INVALID", check for more errors.

Description: A switch responded but with the wrong response code. This error is related to wrong internal CAN bus communication codes.

SYST:ERR?"

Result was "12, SWITCH'S POSITION INCORRECT", check for more errors.

Description: One of the switches reported to be closed on a position different than what it was commanded to be.

E.g. Commanded position is 4, reported position is 3.

SYST:ERR?"

Result was "13, SWITCH'S POSITION UNKNOWN", check for more errors.

Description: One of the switches reported to be closed on an unknown position. E.g. A defective / damaged switch.

SYST:ERR?"

Result was "20, MATRIX IS NOT CONFIGURED", check for more errors.

Description: The configuration file (factory configuration) defining all switches configured inside the matrix has not been uploaded. The matrix does not 'know' what and how many switches to control.

SYST:ERR?"

Result was "21, CONFIGURATION FILE IS CORRUPT", check for more errors.

Description: The configuration file (factory configuration) defining all switches configured inside the matrix is corrupted.

SYST:ERR?"

Result was "22, CONFIGURATION FILE DOES NOT MATCH INSTALLED SWITCHES", check for more errors.

Description: The configuration file (factory configuration) defining all switch types configured inside the matrix does not match the actual installed switch types.

This error code is generated only at boot up and refers only to answering switches. A switch not answering to CAN messages would result into an error code 10.

SYST:ERR?"

Result was "23, MATRIX CONTAINS A 0 ID", check for more errors.

Description: The matrix contains a switch that has not been assigned a valid CAN bus address. ID 0 is not a valid CAN bus address.

SYST:ERR?"

Result was "30, COMMAND UNRECOGNIZED", check for more errors.

Description: This error code is generated when the commanded string does not contain any valid keyword (e.g. Route, System, *IDN?, *RST,) at all.

SYST:ERR?"

Result was "36, ID IS OUT OF RANGE", check for more errors.

Description: A non existing switch ID has been commanded.
Eg. Sending *Route:Switch11 8*. When switch 11 does not exist.

SYST:ERR?"

Result was "50, UNABLE TO ACQUIRE IP ADDRESS", check for more errors.

Description: DHCP is enabled (ON), but the IP address could not be acquired dynamically.
Eg. Ethernet connection cable is disconnected.

SYST:ERR?"

Result was "51, FAN STALL", check for more errors.

Description: On models with fans equipped with sensors, one or more fans have stalled (only when this alarm has been enabled at the factory).
Note: Not applicable for most models.

SYST:ERR?"

Result was "52, INTERNAL TEMPERATURE EXCEEDS THRESHOLD", check for more errors.

Description: On models with temperature sensors, one or more temperature sensors has exceeded its alarm threshold (only when this alarm has been enabled at the factory).
Note: Not applicable for most models.

SYST:ERR?"

Result was "53, POWER SUPPLY FAILURE", check for more errors.

Description: On matrices with redundant power supplies it will indicate that one of the power supplies does not operate.
E.g. Damaged power supply or blown fuse on the power supply.

Result was "0"NO ERROR"", No more errors, error queue is empty.

6.5.2 SYST:IPADDRESS?

Syntax

SYSTem:IPADDRESS?

Description

Returns the matrix IP address.

Result

xxx.yyy.zzz.aaa

Possible error codes

None

6.5.3 SYST:IPADDRESS xxx.yyy.zzz.aaa

Syntax

SYSTem:IPADDRESS xxx.yyy.zzz.aaa

Description

Sets system IP address to xxx.yyy.zzz.aaa.

Possible error codes

5

Factory default value

200.169.200.180

Power on behavior

Keeps last value

***RST effect**

None

Timing

In order for the new IP address to take effect the matrix needs to be power cycled.

6.5.4 SYST:TCPPOINT?

Syntax

SYSTem:TCPPOINT?

Description

Returns the matrix TCP Port number.

Result

n

Possible error codes

None

6.5.5 SYST:TCPPOINT x

Syntax

SYSTem:TCPPOINT x

Description

Sets the matrix TCP Port number to x.

Possible error codes

5

Factory default value

10

Power on behavior

Keeps last value

***RST effect**

None

Timing

In order for the new TCP Port to take effect the matrix needs to be power cycled.

6.5.6 SYST:GATEWAY?

Syntax

SYSTem:GATEWAY?

Description

Returns the matrix gateway address.

Result

xxx.yyy.zzz.aaa

Possible error codes

None

6.5.7 SYST:GATEWAY xxx.yyy.zzz.aaa

Syntax

SYSTem:GATEWAY xxx.yyy.zzz.aaa

Description

Sets matrix gateway address to xxx.yyy.zzz.aaa.

Possible error codes

5

Factory default value

200.169.0.0

Power on behavior

Keeps last value

***RST effect**

None

Timing

In order for the new Gateway address to take effect the matrix needs to be power cycled.

6.5.8 SYST:MASK?

Syntax

SYSTem:MASK?

Description

Returns the matrix subnet mask address.

Result

xxx.yyy.zzz.aaa

Possible error codes

None

6.5.9 SYST:MASK xxx.yyy.zzz.aaa

Syntax

SYSTem:MASK xxx.yyy.zzz.aaa

Description

Sets the matrix subnet mask address to xxx.yyy.zzz.aaa.

Possible error codes

5

Factory default value

255.255.255.0

Power on behavior

Keeps last value

***RST effect**

None

Timing

In order for the new Mask address to take effect the matrix needs to be power cycled.

6.5.10 SYST:MACADDRESS?

Syntax

SYSTem:MACADDRESS?

Description

Returns the matrix mac address.in hex format

Result

aa.bb.cc.dd.ee.ff

Possible error codes

None

6.5.11 SYST:SERIALNUMBER?

Syntax

SYSTem:SERIALNUMBER?

Description

Returns the matrix serial number.

Result

n

Possible error codes

None

6.5.12 SYST:TIMEOUT?

Syntax

SYSTem:TIMEOUT?

Description

The Timeout is used to automatically close the TCP/IP socket after a certain amount of seconds of inactivity on the port.

Returns the Time out setting for the TCP/IP connection (n is in seconds).
n = 0 means no Time out is set.

Result

n

Possible error codes

None

6.5.13 SYST:TIMEOUT x

Syntax

SYSTem:TIMEOUT x

Description

The Timeout is used to automatically close the TCP/IP socket after a certain amount of seconds of inactivity on the port.

Sets the Time out setting for the TCP/IP connection (n is in seconds).
x = 0 means no Time out is set.

Possible error codes

5

Factory default value

0

Power on behavior

Keeps last value

***RST effect**

None

6.5.14 SYST:STATUS?

Syntax

SYSTem:STATUS?

Description

This command will return all Switch positions, Local/Remote mode, Power supply status, High temperature alarm status, Fan stall alarm and Errors list separated by a semicolon.

Note 1: Power supply status, High temperature alarm status and Fan stall alarm are only returned if enabled.

(Most models do not have redundant power supplies, temperature sensors and fans and therefore will not report this status information)

Note 2: Multiple instances of the same error code will appear multiple times. E.g. if two different switches fail to respond to CAN messages, two instances of error 10 will be returned.

But multiple error instances of the same switch will appear only once.

Result

“SWITx y;SWITx y;SWITx y;.....;SWITx y;LOC;PWR1 OK;PWR2 FAULT;
ERRORS 5,3,0”

SWIT = Switch

X = Switch number (ID)

Y = Switch position

LOC = Local mode

REM = Remote mode

PWR1 = Power supply 1

PWR2 = Power supply 2

(Only for systems with dual power supplies)

TEMP1= Temperature sensor 1 (Only if temp sensor 1 is enabled)

TEMP2= Temperature sensor 2 (Only if temp sensor 2 is enabled)

TEMP3= Temperature sensor 3 (Only if temp sensor 3 is enabled)

TEMP4= Temperature sensor 4 (Only if temp sensor 4 is enabled)

FAN1 = Fan 1 (Only if Fan sensor 1 is enabled)

FAN2 = Fan 2 (Only if Fan sensor 2 is enabled)

FAN3 = Fan 3 (Only if Fan sensor 3 is enabled)

FAN4 = Fan 4 (Only if Fan sensor 4 is enabled)

ERRORS = Error codes (Each number corresponds to a specific error code described in the user manual. Not all error codes apply to the matrix).

Possible error codes

None

6.6 Switch [Module] Command Set

The following contains the switch [module] commands of SCPI that the Ethernet control is compatible with.

6.6.1 :SWITCh<id>[:VALue] <number>

Syntax

[ROUte]:SWITCh<id>[:VALue] <number>

Description

This command is used to control the position of the switches. The switch specified by the numeric suffix <id> is set to position <number>. Switch positions are specified in a 0 to N fashion, therefore legal values for <number> are from 0 to the maximum number of position for the switch. For example, a SP10T switch has 10 positions, 0 thru 10. Position 0 means no position is closed (open switch).

6.6.2 Setting switch x to position n

x = switch [module] address.

n = position to set and must be within the switches parameter.

(Example: SP10T valid positions are 0 thru 10 only).

Examples:

- ROUTE:SWITCHx n
- ROUT:SWITCHx n
- ROUTE:SWITx n
- ROUT:SWITx n
- :SWITCHx n
- :SWITx n
- ROUTE:SWITCHx:VALUE n
- ROUTE:SWITCHx:VAL n
- :SWITx:VAL n

Possible error codes

5, 10, 12, 13

Factory default value

N.a.

Power on behavior

Keeps last value

*RST effect

SP6T switch: will open all positions

Transfer switch: will close position 1

Timing

The timing to execute a command depends on the length of the command (in case of concatenated commands).

As a rule of thumb electromechanical switches require approximately 30ms to switch position. It is safe to consider some safety margin and increase this timing to 40-50 ms when developing the control software.

Multiple switch commands are not executed in a sequential manner but rather in parallel.

6.6.3 Requesting Switch x current position

x = switch address.

Examples:

- ROUTE:SWITCHx?
- ROUT:SWITx?
- :SWITx?

Result:

Returns the current position of switch x.

Possible error codes

10, 11, 12, 13

Timing

The timing to execute a command depends on the length of the command (in case of concatenated commands).

As a rule of thumb electromechanical switches require approximately 30ms to switch position. It is safe to consider some safety margin and increase this timing to 40-50 ms before issuing this command after setting a new switch position.

Multiple switch commands are not executed in a sequential manner but rather in parallel.

6.7 DHCP Command Set

The following contains the DHCP (Dynamic Host Configuration Protocol) commands of SCPI that the Ethernet control is compatible with.

6.7.1 SET:DHCP ON or SET:DHCP OFF

Syntax

SET:DHCP ON | OFF

Description

Turns DHCP mode ON or OFF

Possible error codes

5

Factory default value

OFF

Power on behavior

Keeps last value

***RST effect**

None

Timing

In order for the new DHCP settings to take effect the matrix needs to be power cycled.

6.7.2 GET:DHCP

Syntax

GET:DHCP

Description

Returns DHCP mode

Result

ON

or

OFF

Possible error codes

None

RS232 and Ethernet Command description for 5345 & 5346 matrices rev.1 (9-14-2011)

	Command Syntax	Response	Action
1	SYST:IPADDRESS?	xxx.yyy.zzz.aaa	Returns system IP address
2	SYST:IPADDRESS xxx.yyy.zzz.aaa		Sets system IP address to xxx.yyy.zzz.aaa
3	SYST:TCPPOORT?	n	Returns TCP port number
4	SYST:TCPPOORT x		Sets TCP port number to x
5	SYST:GATEWAY?	xxx.yyy.zzz.aaa	Returns system gateway address
6	SYST:GATEWAY xxx.yyy.zzz.aaa		Sets system gateway address to xxx.yyy.zzz.aaa
7	SYST:MASK?	xxx.yyy.zzz.aaa	Returns system subnet mask address
8	SYST:MASK xxx.yyy.zzz.aaa		Sets system subnet mask address to xxx.yyy.zzz.aaa
9	SYST:MACADDRESS?	xx.yy.zz	Returns system MAC address
10	SYST:SERIALNUMBER?	n	Returns system serial number
11	SYST:TIMEOUT?	n	Returns Time out setting for TCP/IP connection (n is in seconds)
12	SYST:TIMEOUT x		Sets Time out setting for TCP/IP connection (x is in seconds)
13	SYST:ERR? or SYST:ERROR?	-4,SYNTAX ERROR	Returns system error number and error description. (The response shown in this table is just an example).
14	SYST:STATUS?	SWITx y;SWITx y;SWITx y;... ;SWITx y;LOC;PWR1 OK;PWR2 FAULT; ERRORS 5,3,0	This command will return all Switch positions, Local/Remote mode, Power supply status and Errors list in the error buffer separated by a semicolon.
15	*IDN?	DowKey 5345 or Dowkey 5346	Gives string with: Vendor and model
16	*OPC?	1 or 0	Gives 1 if previous operation was completed and gives 0 if previous operation is still not complete.
17	*RST		Opens all switches.
18	ROUTE:SWITChx y or :SWITChx y		Closes position y on switch x
19	ROUTE:SWITChx? or :SWITChx?	n	Gives current position of switch x
20	SET:DHCP ON or SET:DHCP OFF		Turns DHCP mode ON or OFF
21	GET:DHCP	ON or OFF	Returns DHCP mode

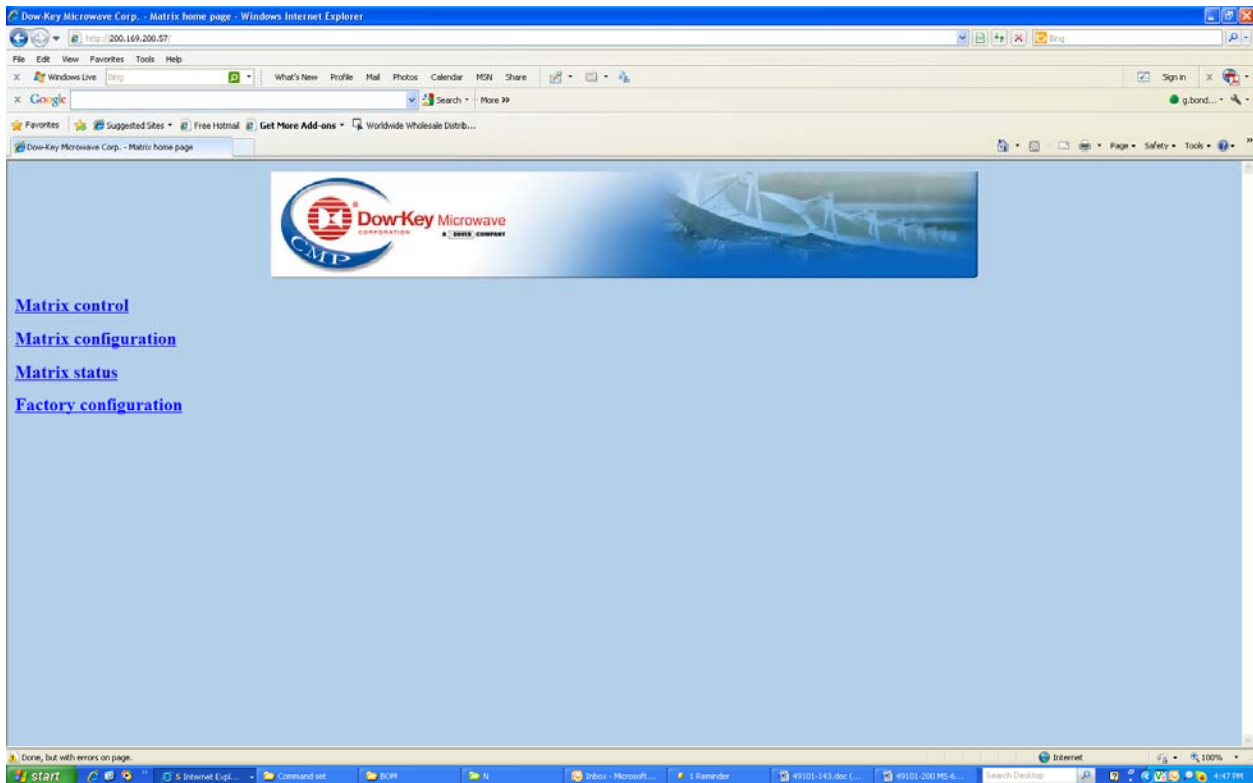
Note:

1. Commands are **NOT** case sensitive
2. Every command and response on the Ethernet port should have “\r\n” in the end.
3. Multiple commands with same header can be given in a single command line
e.g. SYST:IPADDRESS?; TCPPOORT?; SERIALNUMBER 2
or
ROUTE:SWITCH1 2; SWITCH1?;
note that the commands have to separated by ‘;’
4. In command SYST:TIMEOUT? The returned value n is in seconds. The default value is 0.
0 = no timeout.

7 Web Page Server (HTTP)

7.1 Web Page Server Control

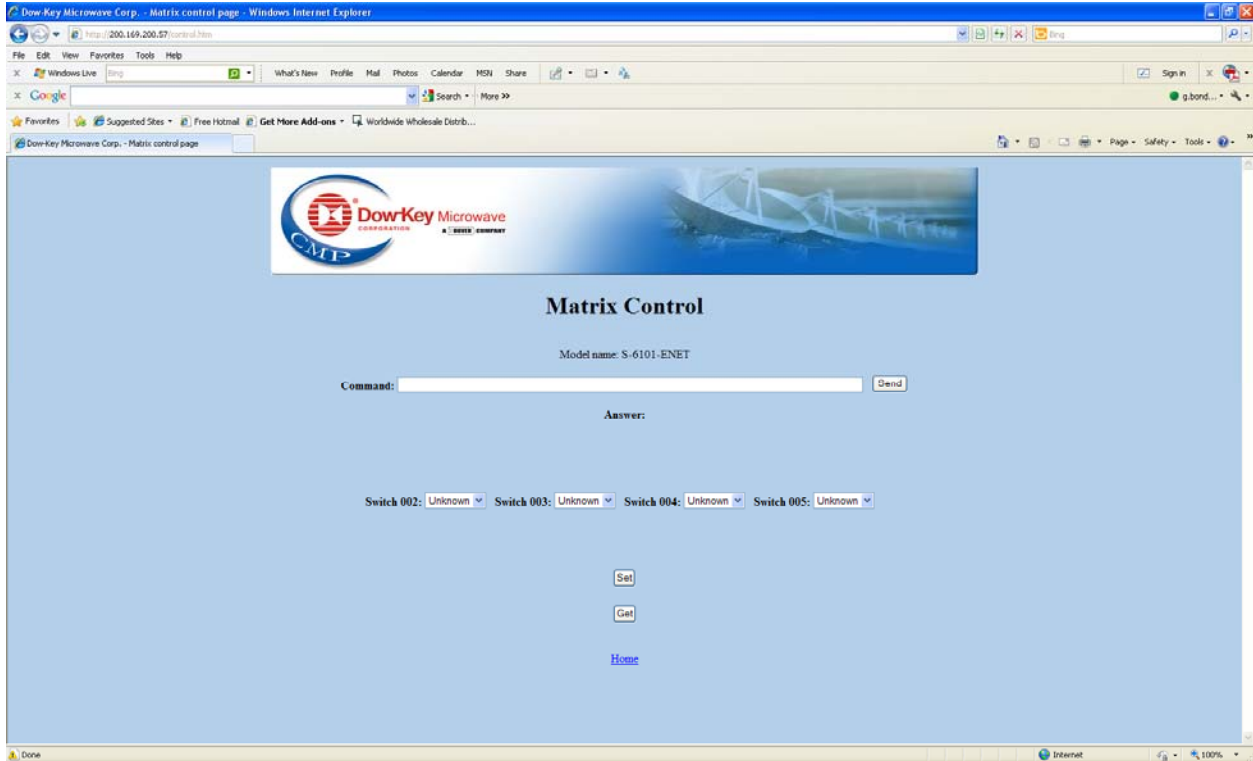
The matrix may be controlled by way of web pages served by the matrix over its Ethernet port. With the matrix properly connected to an Ethernet (see Section 4), type the matrix's current IP address into a browser's Address Bar. The following page should appear:



The Operator may select '**Matrix Control**', '**Matrix Configuration**', or '**Matrix Status**'; '**Factory Configuration**' is reserved for the sole use by Dow-Key Microwave.

7.2 Matrix Control

Clicking on **'Matrix control'** will show the below page.



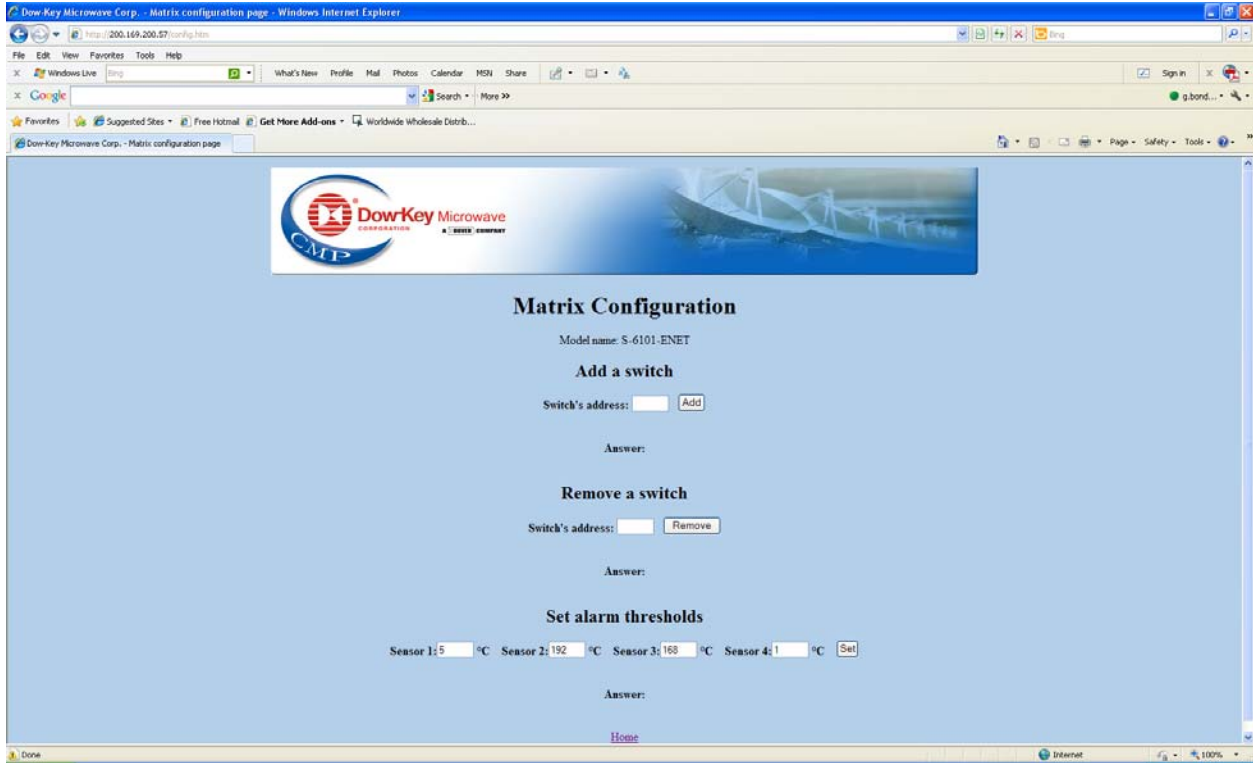
Remote mode commands may be typed into the Command text box and then clicking on the **'Send'** button. See section 6 for the remote command list and its syntax.

If the command implies that the matrix responds (for instance when querying the matrix) the matrix's response will be shown next to the **'Answer:'** label.

The bottom half displays the current position of all switches currently configured to the matrix. Their positions may be set by selecting one from a switch's drop down box and then clicking **'Set'**. Clicking on the **'Get'** button returns the position of all switches.

7.3 Matrix Configuration

Clicking on 'Matrix configuration' will show the below page.



! Important Note:

The matrix controller is designed to offer the maximum expandability and flexibility possible and therefore has features common to other Dow-Key matrix models. The here described 'Add a Switch' and 'Remove a Switch' features are some of those that, although available and fully functioning, should only be used if needed and appropriate.

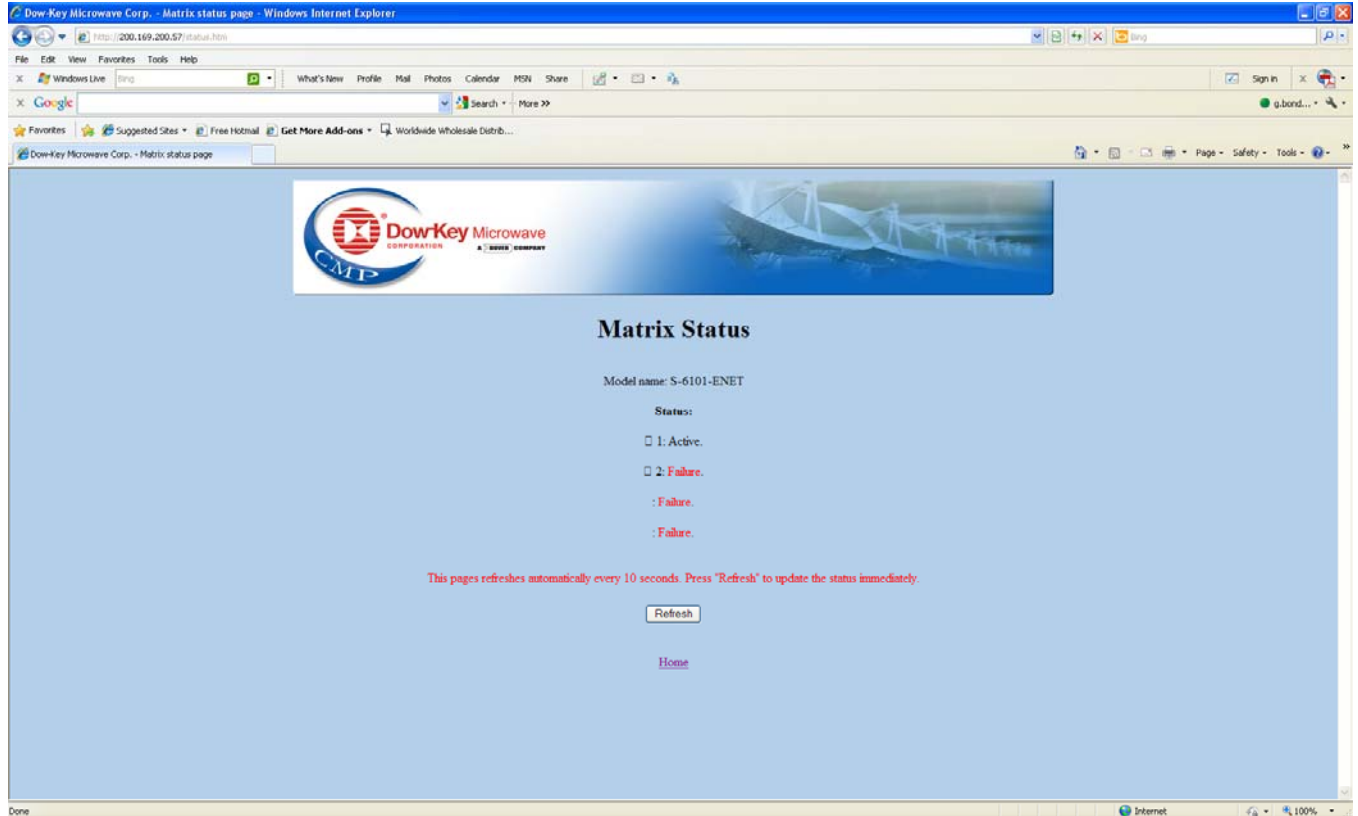
Switches may be added and deleted from the Matrix Configuration using these commands.

For those matrix models with a custom or fixed RF configuration (in other words where the internal RF switches and its connections are defined on a custom bases or are established and fixed by design), no switch shall be added or removed from the matrix configuration. Not following this instruction will result in a non working matrix!

This page also allows to set the temperature alarm threshold of the temperature sensors. This feature is disabled by setting all 4 temperature alarm thresholds to 0°C. Most matrices do not contain any devices that produce significant heat, therefore these models do not feature any temperature sensors. Leave all 4 temperature alarm thresholds to 0°C.

7.4 Matrix Status

Clicking on **'Matrix status'** will show the below page.



This page displays the current status of alarm sources (power supplies, fans, temperatures).

If the matrix does not have a redundant power supply, fans with stall sensors and temperature sensors, than this page will not display any of this information.

Appendix A

Technical Specifications

Model:	MS-2U18S-4/6T-ENET
Configuration:	4 internally terminated latching SP6T switches mounted on the rear panel
RF Connectors:	SMA (on rear panel)
Frequency range:	DC to 18 GHz
Return loss (VSWR)	
Insertion loss	
Isolation	
RF Power:	

Frequency (GHz):	DC - 4	4 - 8	8 - 12.4	12.4 - 18
VSWR (Ratio max):	1.20 : 1	1.30 : 1	1.40 : 1	1.50 : 1
Insertion Loss (dB max):	0.2	0.3	0.4	0.5
Isolation (dB min):	80	75	70	60
RF Power (Watts CW max):	100	50	35	25

Impedance:	50 Ω
Switching Speed:	50ms (per switch)
Operating Temp:	0 to 50 degrees C
Switch Type:	Four internally terminated latching SP6T. Switch p.n. 461KL-420823N-ROHS
Line Voltage:	120-240 VAC, 50-60 Hz
Control Interfaces:	Ethernet via RJ-45 Connector RS-232 via 9-pin D-Sub female connector CAN Bus via 4 pin XLR female connector USB type A (used as 'virtual' serial port)
RS-232 Settings:	Settable at 1200, 2400, 4800, 9600 (default), 19200, 38400, 57600, 115200 bits/sec, 8 bit data, no parity, 1 stop bit
Dimensions:	3.5" H x 19" W x 15.625" D (without handles)

Appendix B

RF Configuration

Model: MS-2U18S-4/6T-ENET

Four internally terminated latching SP6T switches (Dow-Key part number: 461KL-420823N-ROHS) mounted on the rear panel.

This switch is a latching internally terminated 6 position switch. Any RF port that is not closed to the common port is terminated to 50 Ohm. The terminations can handle up to 2W of power.

