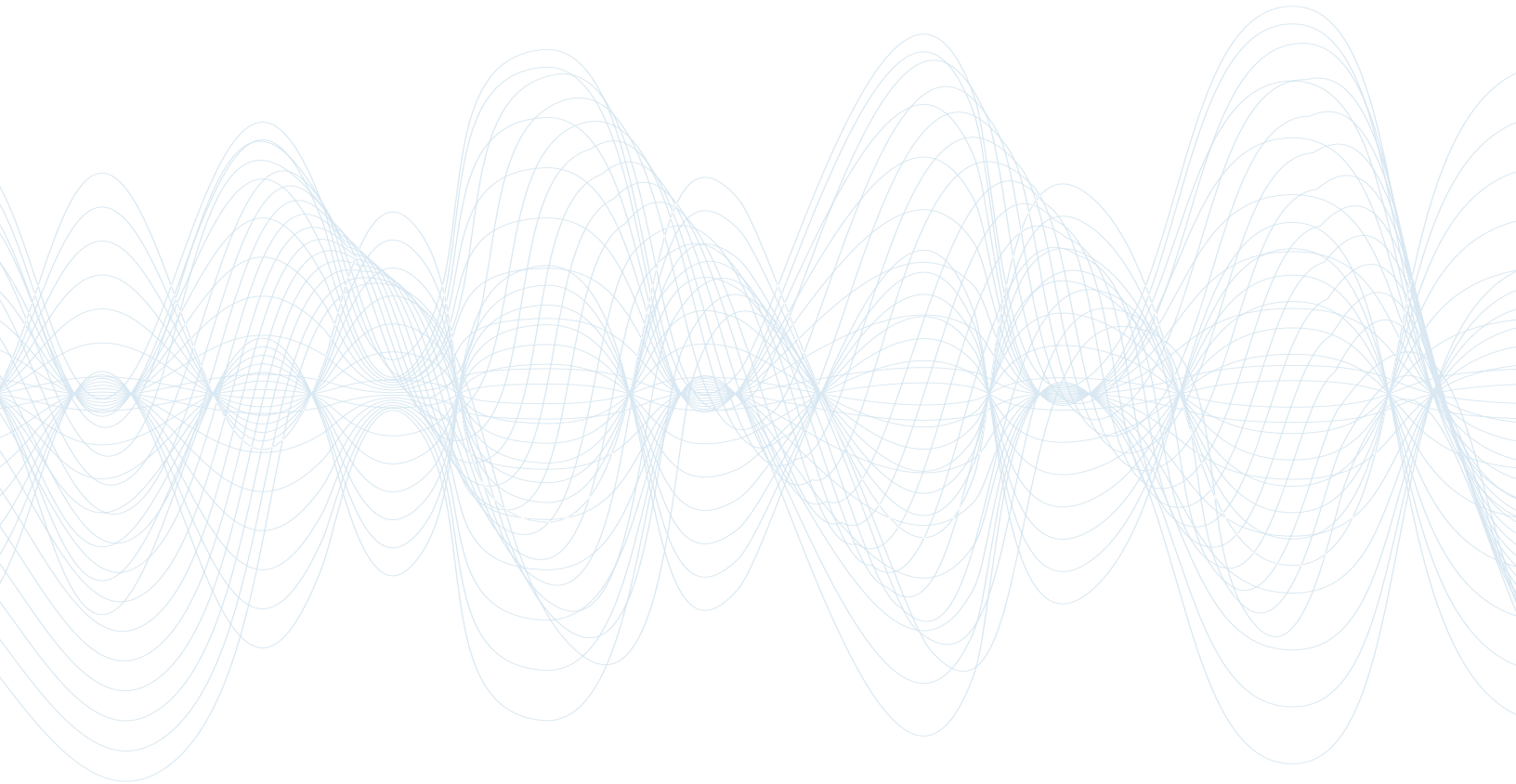


# PROGRAMMABLE ATTENUATOR





41214-005 Shown

- Solid State
- 30-3000 MHz  
– 0-127 dB in 1 db Steps
- 200-6000 MHz  
– 0-63 dB in 1 db Steps

41214-007 Shown

## RF Characteristics

Product	Frequency MHz	VSWR (max)	Ins. Loss dB (max)	Attenuation Range (dB)	Input Power dBm (CW)
41214-005	200-6000	2.3	7.5	0-63	+20
41214-006	200-800	1.8	5.5	0-63	+20
	800-3000	1.5	5.5	0-63	+20
41214-007	30-2000	1.6	6.0	0-127	+15
	2000-3000	1.6	8.0	0-127	+15

Note: Consult with factory for more data

## Specifications

### Operating Voltage:

41214-005	-5 Vdc (-4.5 to -5.5 Vdc)
41214-006	5 Vdc (-4.5 to -5.5 Vdc)
41214-007	±15 Vdc (±12 to 15 Vdc)

### Coil Current (max. @ nom. Vdc & 25°C)\*:

41214-005/006	-5 Vdc/5 Vdc	10 mA
41214-007	±15 Vdc	80 mA

### Switching Time:

41214-005/006	300 nS
41214-007	80 μS

### Attenuation Steps:

41214-005/006	1, 2, 4, 8, 16, and 32
41214-007	1, 2, 4, 8, 16, 32, and 64

### Control Logic (six lines):

- TTL Low (for Thru Path)
- TTL High (for Attenuation)

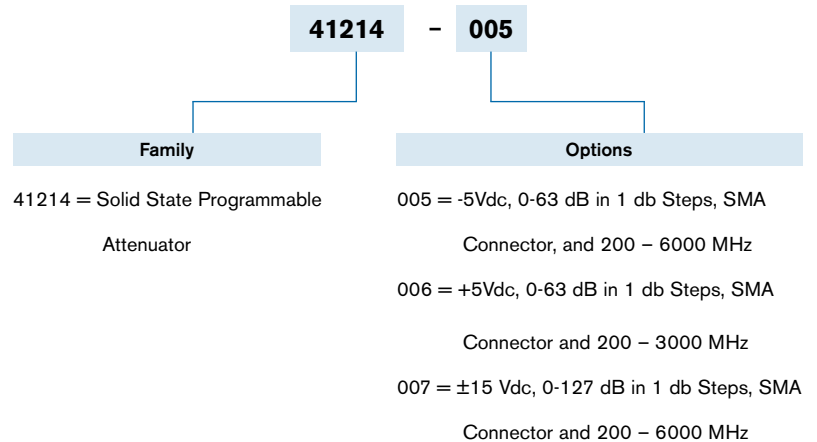
### Temperature:

- Operating: 0°C to +70°C
- Storage: -40°C to +85°C

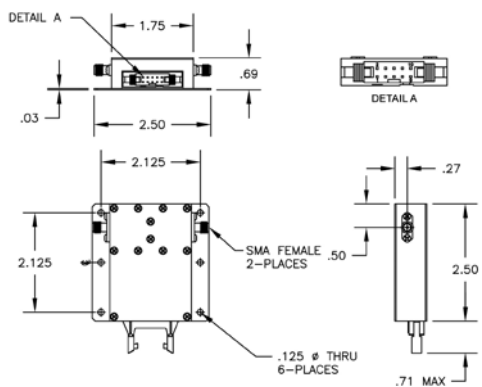
### Impedance:

50 Ohm

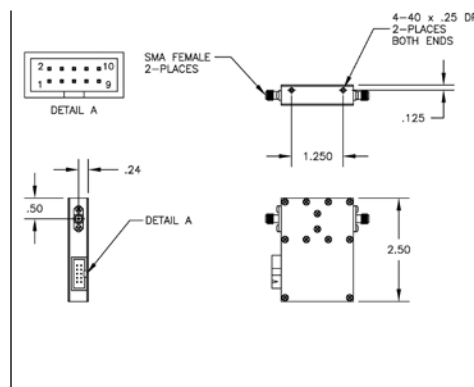
## Part Number Selector



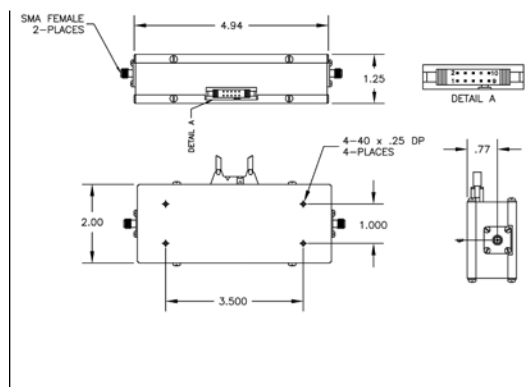
## Mechanical



41214-005 Shown



41214-006 Shown



41214-007 Shown