



- DC-6.5 GHz
- DC-12.4 GHz
- Ruggedized
- 100K Cycles

RF Characteristics

Frequency GHz	VSWR (max)	Isolation dB (min)	Ins. Loss dB (max)
DC-1	1.20	60	0.15
1-4	1.35	60	0.25
4-8	1.45	60	0.35
8-12.4	1.50	60	0.50

Note: RF Characteristics are for type N & TNC Female connectors, consult Dow-Key for other connector configurations

Specifications

Operating Voltage (across temperature range):
28 Vdc (20-30 Vdc)

Coil Current (max. @ nom. Vdc & 20°C)*:
28 Vdc 280 mA

Switching Time:
20 ms maximum

Operating Temperature:
-40°C to +85°C

Mechanical Life, Cycles:
100,000 minimum

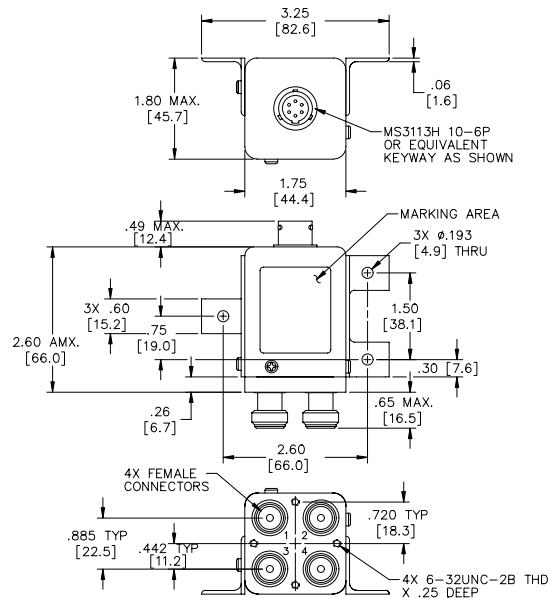
Vibration, Operating:
20g's sine/random

Mechanical Shock, Non-Operating:
50G, 1/2 Sine, 11 ms

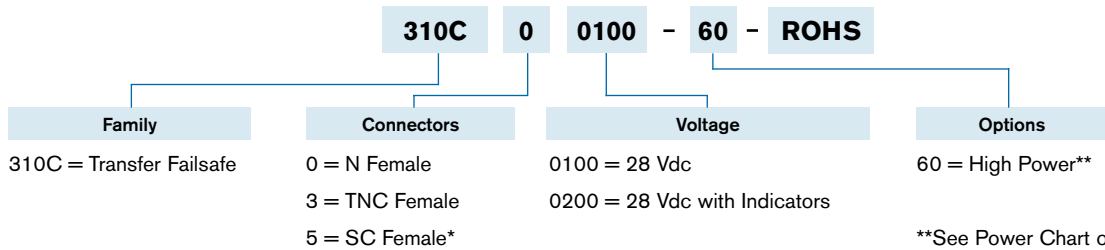
Nominal Weight:
12 oz. (340 g.)

* Performance varies depending on selected options.

Mechanical



310C00100 Shown
For Electrical Schematic, see page # 2-12



**See Power Chart on page # iii

*Consult with Dow-Key for dimensions.