



- DC-2 GHz
- DC-6 GHz
- DC-12.4 GHz
- Medium/High Power
- 1M Cycles

RF Characteristics

Frequency GHz	VSWR (max)	Isolation dB (min)	Ins. Loss dB (max)
DC-1	1.15	85	0.15
1-2	1.20	80	0.20
2-4	1.25	70	0.25
4-8	1.45	60	0.40
8-12.4	1.60	60	0.50

Note: Performance applies to N and TNC type connectors. Consult with factory for other performances.

Specifications

Operating Voltage (across temperature range):

- 12 Vdc (11-14 Vdc)
- 24 Vdc (20-28 Vdc)
- 28 Vdc (24-32 Vdc)

Coil Current (max. @ nom. Vdc & 25°C)\*:

- 12 Vdc 320 mA
- 24 Vdc 200 mA
- 28 Vdc 185 mA

Switching Time:

20 ms maximum

Operating Temperature:

- 25°C to +65°C (Standard)
- 55°C to +85°C (Extended "T" Option)

Mechanical Life, Cycles:

1,000,000 minimum

Vibration, Operating:

10G RMS, 20-2000 Hz

Mechanical Shock, Non-Operating:

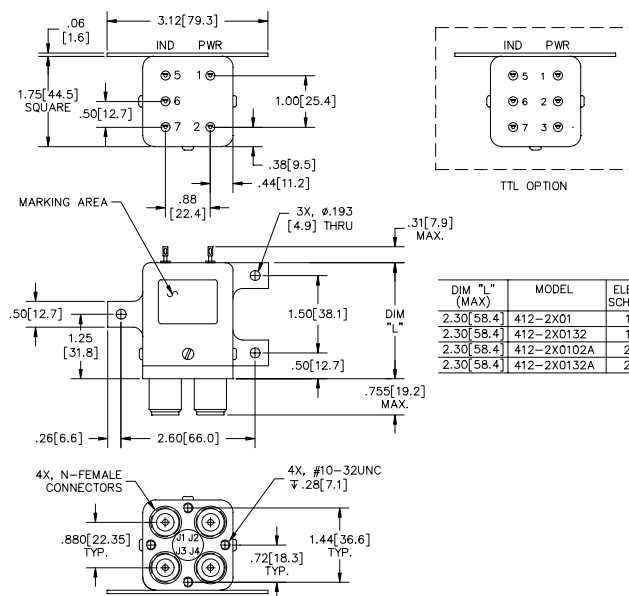
30 G, 1/2 Sine, 11 ms

Nominal Weight\*:

14 oz. (397 g.)

\* Performance and weight varies depending on selected options.

Mechanical



412-2X0132 Shown  
For Electrical Schematic, see page # 2-7

Part Number Selector

412 J - 2 2 01 02 A - ROHS

Special Options	Actuator	Coil Voltage	Connectors	Indicators	Circuit Options
A = High Power	2 = Failsafe	2 = 12 Vdc	01 = N Female	02 = No Indicators**	A = TTL High
C = Special Mounting Bracket	6 = Failsafe with Suppression Diode	3 = 28 Vdc	02 = BNC Female	32 = Indicators	
J = 'D' Connector		8 = 24 Vdc	03 = TNC Female	**Declared only with Circuit Options	
N = No Mounting Bracket		9 = 15 Vdc	53 = SC Female*		
P = Power Plug			*Consult Dow-Key for dimensions		
S = Epoxy Seal					
T = -55°C to + 85°C					
W = Low PIM					

Note: TTL option includes suppression diode. Other options may be available and all combinations may not be possible. Please consult with factory.