

**RF Characteristics**



Frequency GHz	VSWR (max)	Isolation dB (min)	Ins. Loss dB (max)
0-1	1.15	85	0.15
1-2	1.20	80	0.20
2-4	1.25	70	0.25
4-8	1.35	60	0.40
8-12.4	1.50	60	0.50

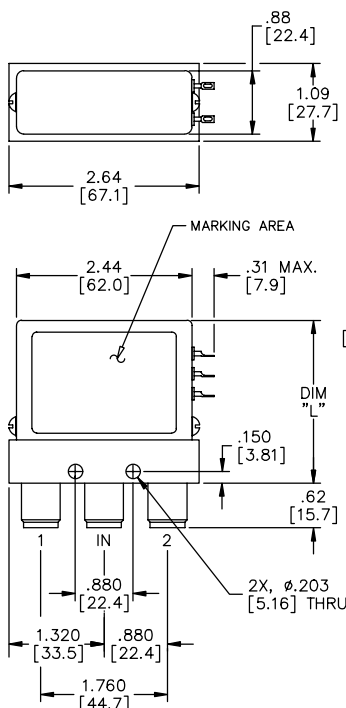
Note: RF characteristics are for Type N & TNC female connectors, consult Dow-Key for other connector configurations

**402 Series SPDT Latching with Indicator Option, N**

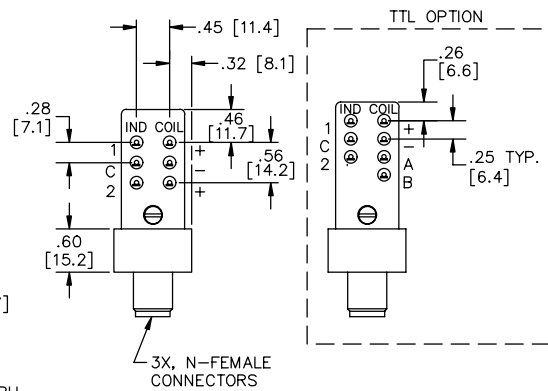
**Specifications**

- Operating Voltage:** (across temperature range)  
12 Vdc (11-14 Vdc)  
28 Vdc (24-32 Vdc)
- Coil Current (max @ nom.Vdc & 20°C):**  
12 Vdc 320 mA  
28 Vdc 135 mA
- Switching Time:**  
20 mS maximum
- Operating Temperature:**  
-25°C to +65°C (Standard)  
-55°C to +85°C (Extended "T" Option)
- Mechanical Life, Cycles:**  
1,000,000 minimum
- Vibration, Operating:**  
10G RMS, 20-2000 Hz
- Mechanical Shock, Non-Operating:**  
50 G, 1/2 Sine, 11 mS
- Nominal Weight:**  
9.0 oz. (260g.)

**Mechanical**



DIM "L" (MAX)	MODEL	ELEC. SCHEM.
2.30 [58.4]	402-3X01	3
2.30 [58.4]	402-3X0132	3
2.40 [61.0]	402-4X01	4
2.40 [61.0]	402-4X0132	4
2.40 [61.0]	402-4X0102A	5
2.40 [61.0]	402-4X0132A	5



402-3X0132 Shown

**Part Number Selection**

For Electrical Schematic see page # 1-8

402 J - 4 2 01 02 A

<p><b>Special Options</b></p> <p>A = High Power J = 'D' Connector P = Power Connector R = (+) Com T = -55°C to + 85°C</p>	<p><b>Actuator</b></p> <p>3 = Pulse Latching 4 = Latching Self Cutoff 7 = Pulse Latching with Suppression Diodes</p>	<p><b>Coil Voltage</b></p> <p>2 = 12Vdc 3 = 28Vdc 4 = 48Vdc 7 = 20Vdc 8 = 24Vdc 9 = 15Vdc</p>	<p><b>Connectors</b></p> <p>01 = N Female 02 = BNC Female 03 = TNC Female 53 = SC Female*</p>	<p><b>Indicators</b></p> <p>02 = No Indicators 32 = Indicators</p>	<p><b>Circuit Options</b></p> <p>A = TTL High L = TTL Low</p>
---	--	---	---	--	---

\*1" connector spacing  
Consult Dow-Key for dimensions

Optional Indicators

Optional Indicators

FAILSAFE TTL - SCH #2

SELF CUTOFF TTL - SCH #5

Optional Indicators

Optional Indicators

Optional Indicators